

## 38 Green Lane, Isle Of Grain

Guide Price £300,000

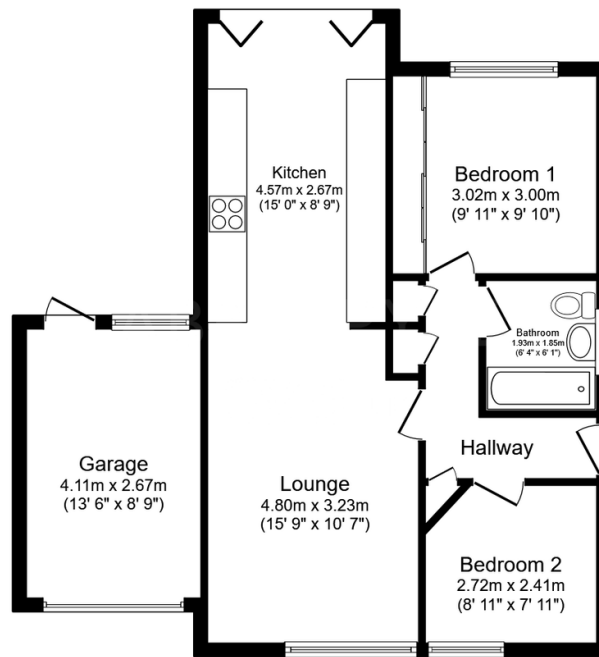
🛏 2 🚿 1 🚗 1



This home positioned in a quiet village within walking distance to a shop, doctors surgery and surrounded by plenty of countryside and coastal walks, it could be just what you have been waiting for. Offering a landscaped garden and modern decoration throughout its ready for the next owner to simply move in. Parking is no hassle with plenty of available parking and the added benefit of a garage. Properties like this one do not come up often. Living in a bungalow offers a life of ease with bright spacious rooms that are all on one level! QUOTE AP0490

## Key Features

- 2 Bedroom Link Detached Bungalow
- Newly Fitted Kitchen
- Landscaped Rear Garden With Composite Decking
- Garage & Driveway
- Bi Fold Doors
- Contemporary Decoration Throughout
- Coastal And Countryside Walks Nearby
- Village Location
- Tenure Freehold / Council Tax Band C
- QUOTE AP0490



**Floor Plan**

Floor area 65.1 m<sup>2</sup> (701 sq.ft.)

TOTAL: 65.1 m<sup>2</sup> (701 sq.ft.)

This floor plan is for illustrative purposes only. It is not drawn to scale. Any measurements, floor areas (including any total floor area), openings and orientations are approximate. No details are guaranteed, they cannot be relied upon for any purpose and do not form any part of any agreement. No liability is taken for any error, omission or misstatement. A party must rely upon its own inspection(s). Powered by [www.Propertybox.io](http://www.Propertybox.io)