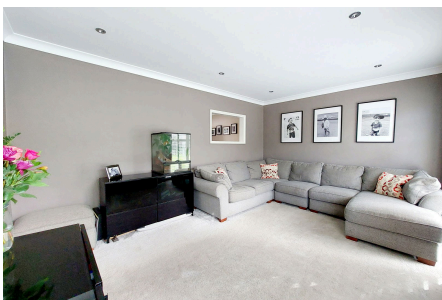


Tunbury Avenue, Chatham, ME5 9EJ

£350,000

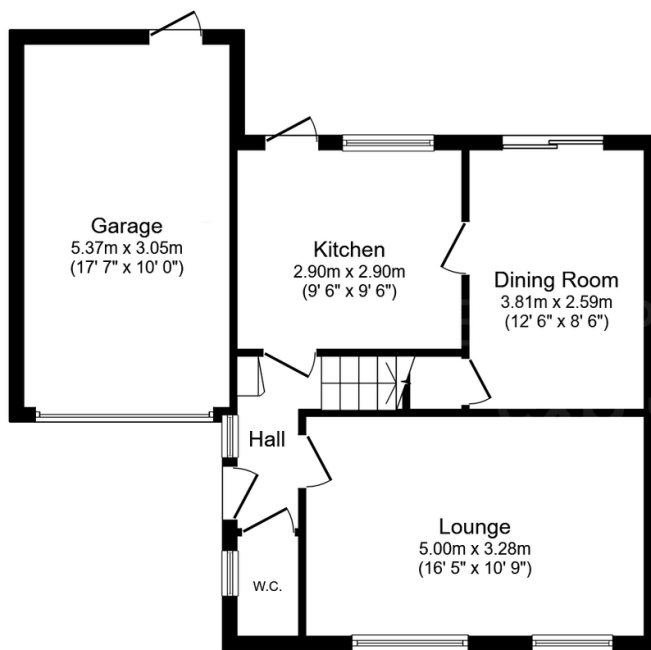
3 1 2



CALL TO BOOK YOUR VIEWING. Guide £350,000 - £375,000. If you are looking for your next family home this three bedroom semi detached property in popular Walderslade certainly ticks a lot of boxes. Pull up on the driveway with enough space for a couple of cars with the added benefit of a garage too. The home is decorated to a neutral finish throughout making it easy to put your own stamp on the property. With a versatile layout means it can be easily adapted to suit a variety of buyers. Call to arrange your viewing. QUOTE REF AP0490

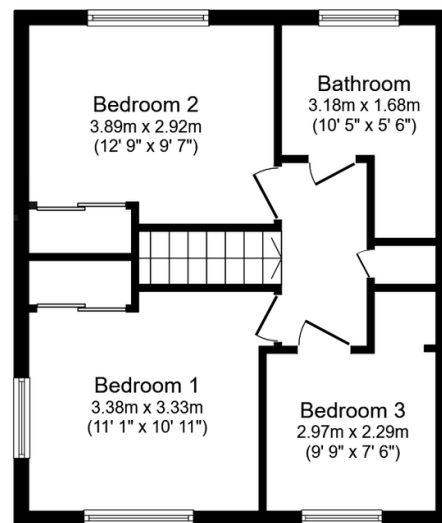
Key Features

- Three bedroom semi detached
- Spacious separate lounge
- Handy downstairs toilet
- Neutral decoration throughout
- Tenure Freehold/Council Tax Band C
- Driveway and Garage
- Family bathroom with separate shower
- Within walking distance to local shops
- Easy access to M2/A2
- QUOTE REF AP0490



Ground Floor

Floor area 60.0 m² (646 sq.ft.)



First Floor

Floor area 43.2 m² (465 sq.ft.)

TOTAL: 103.2 m² (1,111 sq.ft.)

This floor plan is for illustrative purposes only. It is not drawn to scale. Any measurements, floor areas (including any total floor area), openings and orientations are approximate. No details are guaranteed, they cannot be relied upon for any purpose and do not form any part of any agreement. No liability is taken for any error, omission or misstatement. A party must rely upon its own inspection(s). Powered by www.Propertybox.io