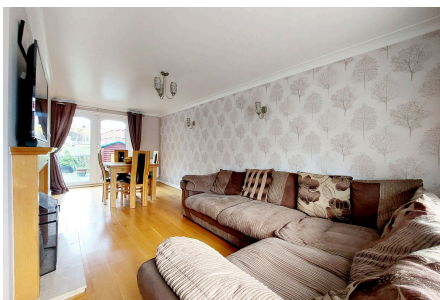


16 Kingshill Drive, Hoo

Guide Price £300,000

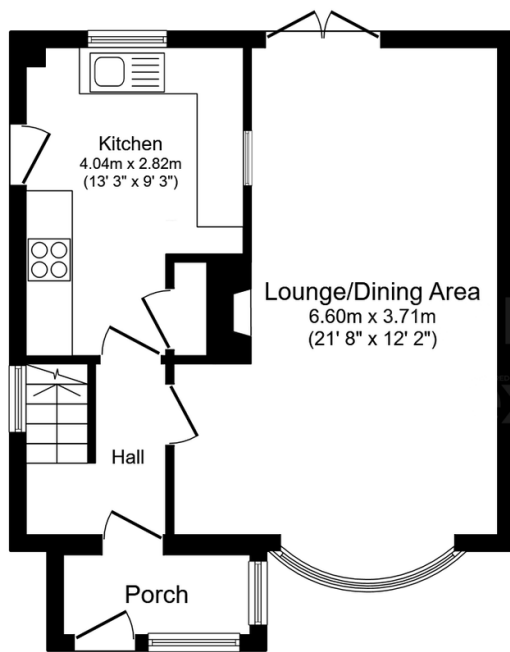
2 1 0



CALL TO BOOK YOUR VIEWING. Guide Price £300,000 - £325,000. If you are looking for your first home or perhaps you are looking to downsize? This two double bedroom semi detached home could certainly tick the boxes. Offering a spacious driveway and a generous size garden with the added benefit of a brick built outbuilding in the garden perfect for a home office or workshop. Decorated to a neutral decor throughout you can pick up your keys and move straight into this property. Call to book your viewing. QUOTE REF AP0490

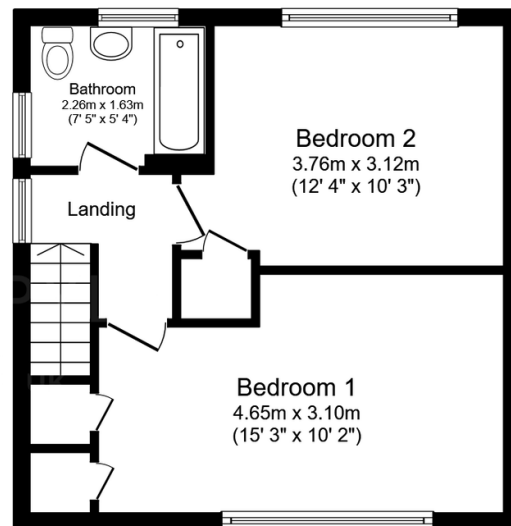
Key Features

- 2 Bedroom Semi Detached Home
- Modern Fitted Kitchen
- Generous Garden With Outside Bar Area
- Village Location
- Tenure Freehold / Council Tax Band B
- Lounge/Diner Over Looking The Garden
- Driveway
- Outbuilding
- Easy Access To A2/M2
- QUOTE AP0490



Ground Floor

Floor area 42.8 sq.m. (461 sq.ft.)



First Floor

Floor area 38.9 sq.m. (418 sq.ft.)

TOTAL: 81.7 sq.m. (879 sq.ft.)

This floor plan is for illustrative purposes only. It is not drawn to scale. Any measurements, floor areas (including any total floor area), openings and orientations are approximate. No details are guaranteed, they cannot be relied upon for any purpose and do not form any part of any agreement. No liability is taken for any error, omission or misstatement. A party must rely upon its own inspection(s). Powered by www.Propertybox.io