

3 Sparrow Drive, Chattenden

£425,000

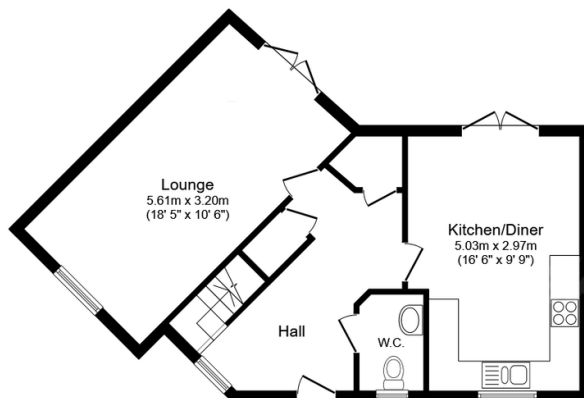
3 2 1



Set on a development built 2 1/2 years ago this 3 double bedroom detached home will make the ideal purchase. Its contemporary decoration and design enables the next owner to simply move straight in. All modern day demands have been met and more with features that include a garage and driveway, spacious cloakroom, en suite to the master bedroom and large living rooms ideal for entertaining. Take advantage of its great location whether you need to hop onto the motorway to get to work or take a leisurely stroll to relax in the surrounding countryside. Call now to book your appointment quoting REF AP4090

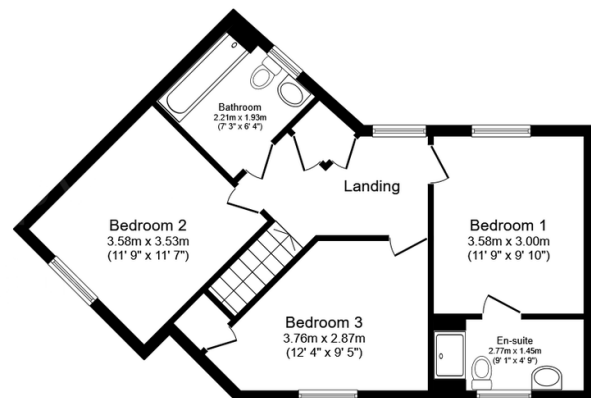
Key Features

- 3 Double Bedroom Detached Home
- Modern Kitchen/Dining Room
- Spacious Downstairs Cloakroom
- Great Access To Motorway Links
- Tenure Freehold/Council Tax Band E
- Garage And Driveway
- En Suite To Master Bedroom
- Close Proximity To Schools & Playground
- Multiple Large Storage Cupboards
- QUOTE REF AP4090



Ground Floor

Floor area 54.4 m² (585 sq.ft.)



First Floor

Floor area 54.6 m² (587 sq.ft.)

TOTAL: 108.9 m² (1,172 sq.ft.)

This floor plan is for illustrative purposes only. It is not drawn to scale. Any measurements, floor areas (including any total floor area), openings and orientations are approximate. No details are guaranteed, they cannot be relied upon for any purpose and do not form any part of any agreement. No liability is taken for any error, omission or misstatement. A party must rely upon its own inspection(s). Powered by www.Propertybox.io