

87 May Road

Guide Price £230,000

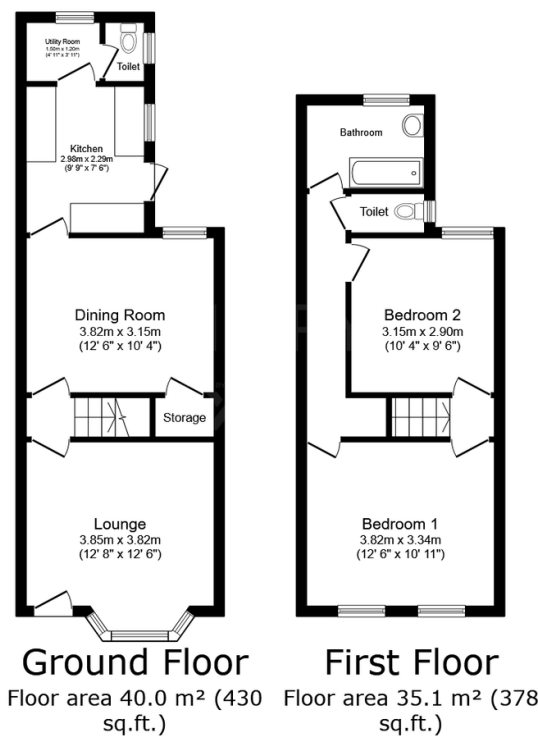
🛏️ 2 🚿 1 🚗 2



With plenty of amenities right on your doorstep this home in May Road will make the ideal investment or first home! Whether you need easy access to travel links including train stations, bus stops and motorway links or looking for a home that offers plenty of space to entertain friends and family this could be the perfect property for you. Contemporary decoration throughout with a modern kitchen and bathroom allows any buyer to simply move in and enjoy from day one! QUOTE AP0490

Key Features

- 2 Separate Bedroom Terraced Home
- Utility Area
- Close proximity to Train Station
- Medway Hospital Nearby
- Tenure Freehold/Council Tax Band
- Upstairs Bathroom & Downstairs Cloakroom
- No Forward Chain
- Near to primary schools
- Modern Kitchen and Bathroom
- QUOTE AP0490



TOTAL: 75.1 m² (808 sq.ft.)

This floor plan is for illustrative purposes only. It is not drawn to scale. Any measurements, floor areas (including any total floor area), openings and orientations are approximate. No details are guaranteed, they cannot be relied upon for any purpose and do not form any part of any agreement. No liability is taken for any error, omission or misstatement. A party must rely upon its own inspection(s). Powered by www.Propertybox.io