



Property Webb
At the HEART of your move

Inch Crescent, Bathgate, EH48 1EU

Offers Over £280,000

🛏 3 🚗 2 🚲 2



Set in the sought-after Inch Crescent in Bathgate, this beautifully refurbished 3/4 bedroom detached family home is a perfect fit for families, couples, or those looking to downsize. The property has been meticulously upgraded over the years, offering a stylish and practical living space. This charming property combines stylish design with practical features, making it a must-see for discerning buyers.

📞 01506 637553

✉ info@property-webb-co.uk

🌐 www.property-webb.co.uk

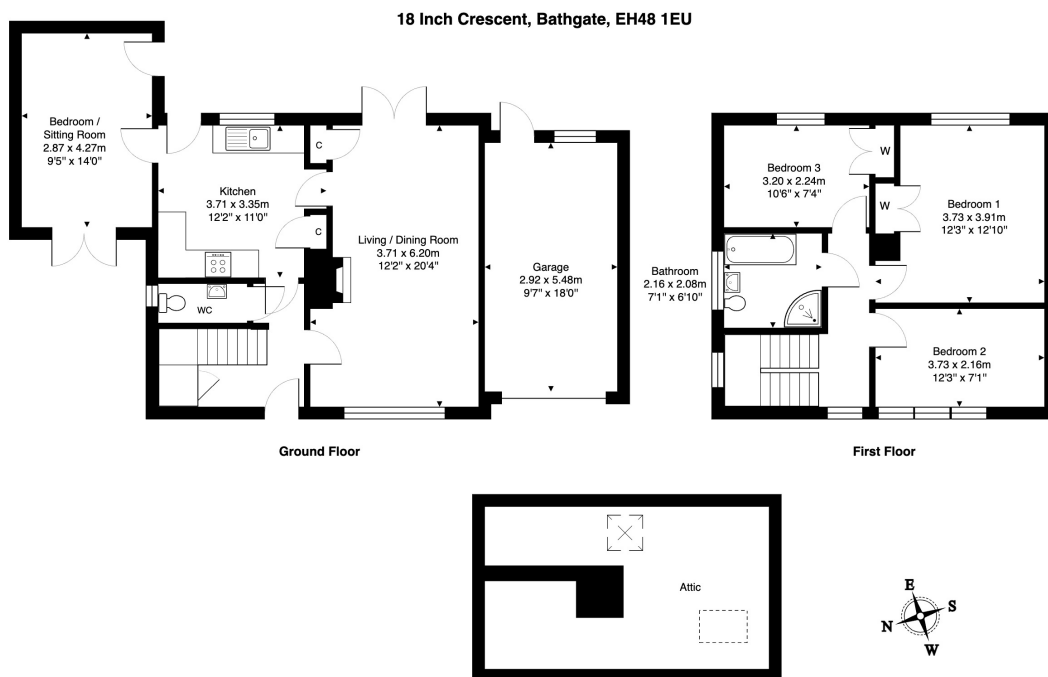
📍 71 South Bridge St, Bathgate, EH48 1TJ



Property Webb
At the HEART of your move

Key Features

- Linked Detached Family Home
- Fully Refurbished Through-out
- Lounge with Feature Coal Fire
- Stylish Contemporary Kitchen
- Side Extension
- 3 Double Bedrooms
- 4 Piece Family Bathroom
- Downstairs WC
- Large Fully Enclosed Garden
- Garage



Total Area: 117.1 m² ... 1260 ft² (excluding attic)

All measurements are approximate and for display purposes only.

01506 637553

info@property-webb-co.uk

www.property-webb.co.uk

71 South Bridge St, Bathgate, EH48 1TU