



Property Webb
At the HEART of your move

The Steading, South Lodge Avenue, Mid Calder, EH53 0HH

Offers Over £240,000

🛏️ 2 🍽️ 1 🚗 1



The Steading, South Lodge Avenue, is a beautifully maintained B-listed two-bedroom steading, set within a tranquil courtyard setting in the conservation village of Mid Calder. Approximately 200 years old and converted in the 1990s, the property retains its traditional charm with exposed brickwork, cast iron radiators, and stable-style doors while offering modern comforts. This charming home offers the ideal blend of character and convenience, ready for its new owner to move straight in.

📞 01506 637553

✉️ info@property-webb-co.uk

🌐 www.property-webb.co.uk

📍 71 South Bridge St, Bathgate, EH48 1TJ

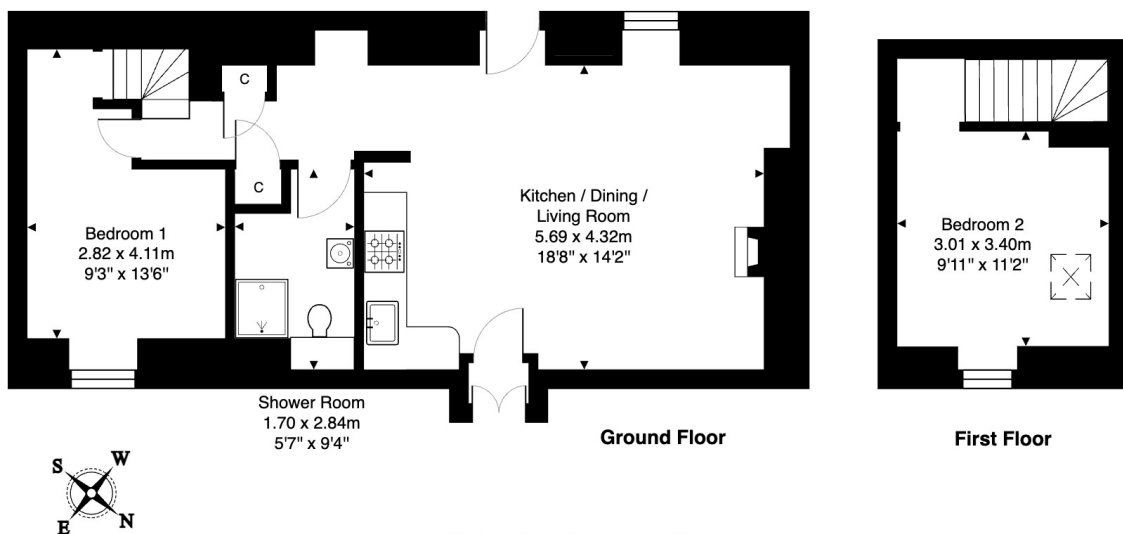


Property Webb
At the HEART of your move

Key Features

- 'B' Listed Steading
- Charming Traditional Features
- Immaculately Presented
- Open Plan Lounge/Kitchen/Dining
- 2 Double Bedrooms
- Fully Tiled Bathroom
- Large Fully Enclosed Garden
- Ample Residents Parking
- Convenient Location
- Tranquil Setting

8 The Steading, Mid Calder, EH53 0HH



All measurements are approximate and for display purposes only.