






Property Webb  
At the HEART of your move

## West Holmes Road, Broxburn, EH52 5NH

Offers Over £325,000

 4  3  2



West Holmes Road is a beautifully presented 4 bedroom detached family home located on a desirable corner plot in Broxburn. Boasting a South-facing garden, a single garage, and a double driveway, this property offers space, style, and practicality for modern family living. This home is ideally suited for families seeking a well-maintained, spacious property in a fantastic location.

 01506 637553

 [info@property-webb-co.uk](mailto:info@property-webb-co.uk)

 [www.property-webb.co.uk](http://www.property-webb.co.uk)

 71 South Bridge St, Bathgate, EH48 1TJ

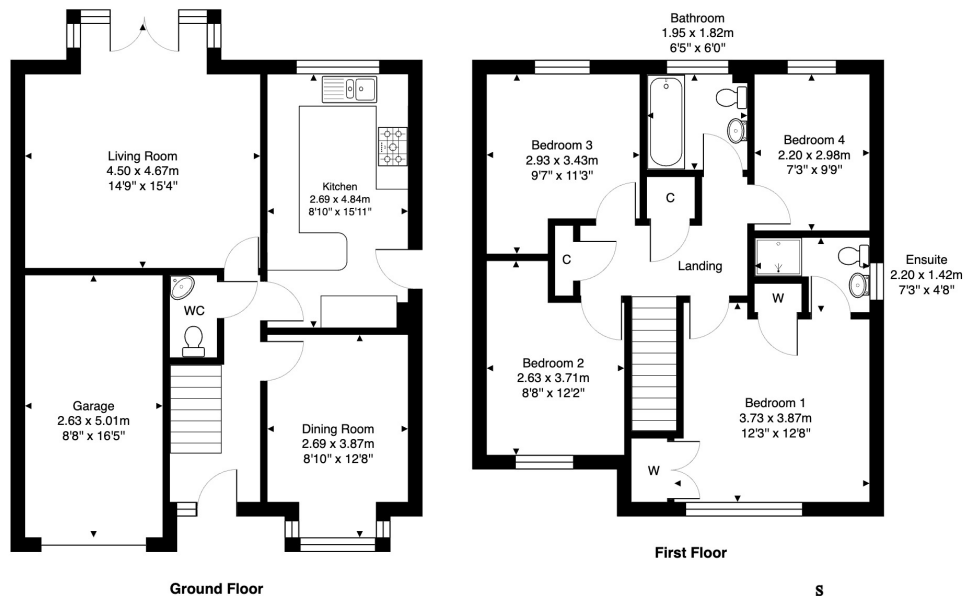


Property Webb  
At the HEART of your move

## Key Features

- Detached Family Home
- Sought after area
- Immaculately presented
- 2 reception rooms
- Stylish kitchen
- Main bedroom with en-suite
- 3 further doubles
- Modern family bathroom
- South facing rear garden
- Single garage & double driveway

12 West Holmes Road, Broxburn, EH52 5NH



Total Area: 122.4 m<sup>2</sup> ... 1317 ft<sup>2</sup>

All measurements are approximate and for display purposes only.



01506 637553

info@property-webb-co.uk

www.property-webb.co.uk



71 South Bridge St, Bathgate, EH48 1TJ