



Property Webb  
At the HEART of your move



Beech Path, Calderwood, East Calder, EH53 0FR  
Offers Over £475,000

5 4 2



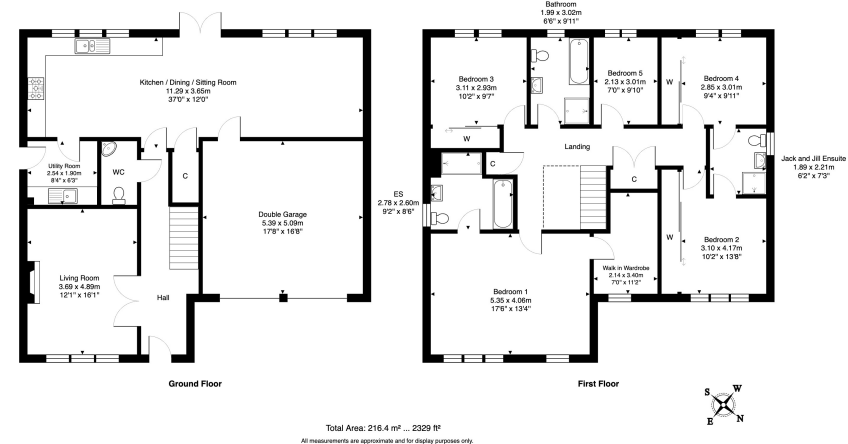


- Executive Detached Family Built by Charles Church
- Prime Calderwood Location
- Lounge with Feature Fireplace:
- Expansive Open-Plan Kitchen & Living Area:
- Luxurious Primary Suite with Dressing Room
- 4 Further Bedrooms
- 4 Piece Family Bathroom & Jack-and-Jill En-Suite
- Double Garage & Driveway:
- South-Facing Private Garden
- Stylish Urban Pod





1 Beech Path, Calderwood, East Calder, EH53 0FR



Part of the Charles Church collection the 'Strathyre' is a property that combines elegance with practicality. This stunning 5 bedroom property combines space and style, featuring a luxurious primary suite with dressing room and en suite, the heart of the home is an open-plan kitchen, dining, and family area, filled with natural light and perfect for modern living.

Enjoy a landscaped South-facing garden with a versatile Urban Pod, ideal as an office or playroom. With high ceilings, a double garage, and premium finishes throughout, this home offers elegance, comfort, and functionality.

01506 637553

info@property-webb.co.uk

www.property-webb.co.uk

71 South Bridge St, Bathgate, EH48 1TJ