

Heathfield Green, Midhurst, GU29 9QA

Guide Price £230,000

 2  1  1



I am delighted to offer a two bedroom ground floor apartment within the much sought after location of Heathfield Green. The apartment has its own private patio and garage, its within half a mile to the town centre. The property is also sold with no onward chain.

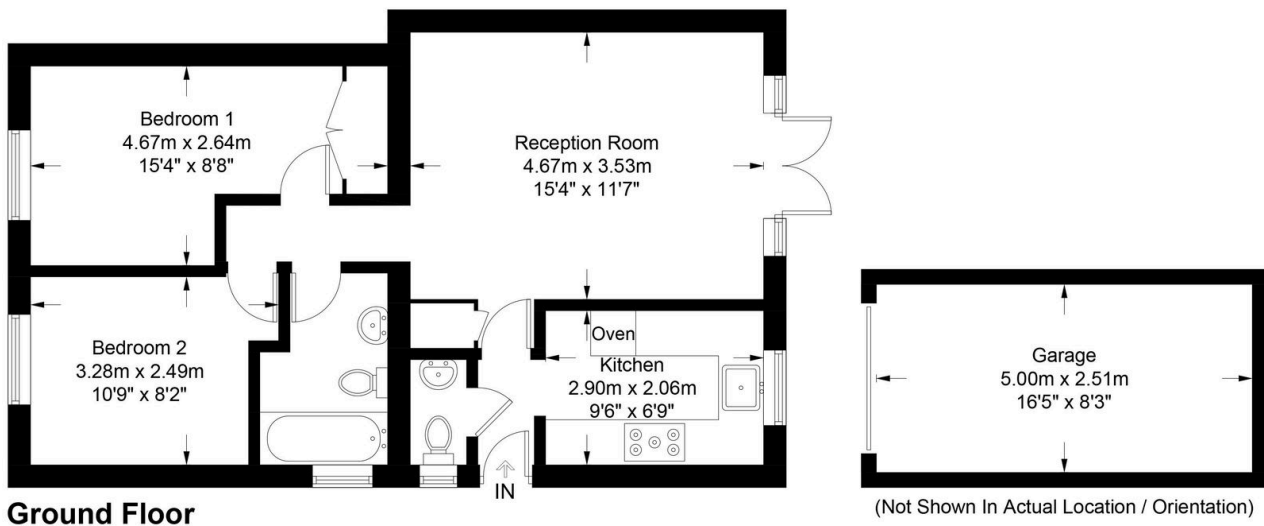
DANIEL ARROWSMITH



Key Features

- Ground Floor Apartment
- Spacious Reception
- Private Patio
- Private Garage
- Close Proximity to Town Centre
- Two Bedrooms
- Modern Kitchen
- Own Entrance
- Communal Parking
- No Onward Chain

Approximate Gross Internal Area = 54.1 sq m / 582 sq ft
Garage = 12.5 sq m / 134 sq ft
Total = 66.6 sq m / 716 sq ft



These plans are for representation purposes only as defined by RICS - Code of Measuring Practice. Not to Scale.
(ID1121501)