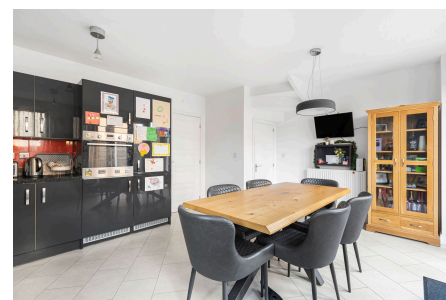


Turner Place, Coulsdon, CR5 3FY

Guide Price £750,000

🛏️ 4 🚿 3 🚻 1



Please Quote Reference number FD1047 For All Enquiries

This stunning, 4-bedroom detached family home, built in 2017, seamlessly blends traditional charm with contemporary comforts. The bedrooms are fitted with floor-to-ceiling wardrobes, with additional storage space throughout the property. The property also consists of 3 bathrooms and a WC on the ground floor, including: 2 ensuite bathrooms and a large family bathroom situated on the first floor. The stylish living space backs on to a modern patio area where you can enjoy a nice cup of coffee, but if you are thinking that this is the only outside space, then think again as there is a great paved garden space, keeping maintenance level low.



07591 006831
fernando.daotro@exp.uk.com

FERNANDO DAOTRO



The large separate kitchen dinner is fitted with bosh appliances and comes with all your white goods.



07591 006831
fernando.daotro@exp.uk.com

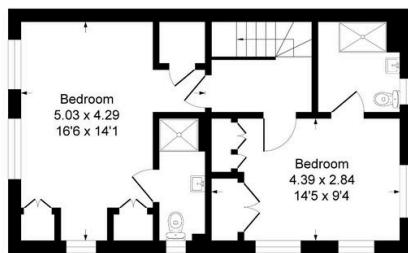


FERNANDO DAOTRO



Key Features

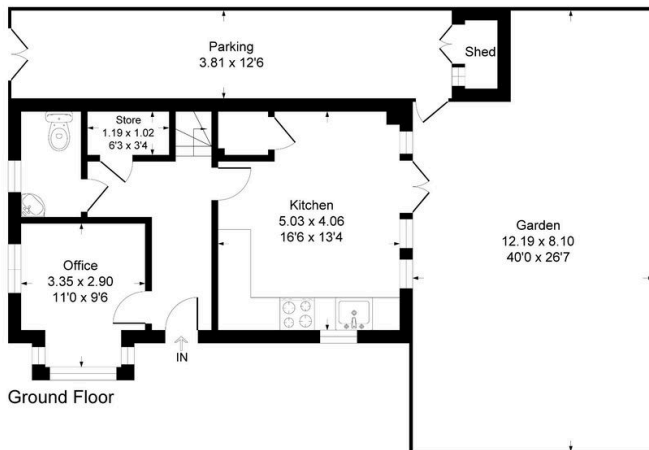
- Please Quote Reference number FD1047 For All Enquiries
- Detached 4 bedroom Freehold House
- 0.5 Miles to Coulsdon South Train Station
- Chain Free - Ready to move into
- Garden and Patio Area
- Guide Price : £750,000 - £800,000
- Parking for Two Cars
- Barratt Homes Development
- Built in 2017
- 3 Bathrooms with 2 en-suites



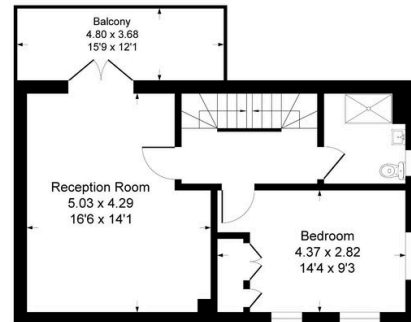
Second Floor

Turner Place, CR5 3FY

Approximate Gross Internal Area 136.9 sq m / 1474 sq ft



Ground Floor



First Floor

This Plan is for layout guidance only. Not drawn to scale unless stated. Windows and door openings are approximate. Whilst every care is taken in the preparation of this plan, please check all dimensions shapes and compass bearings before making any decisions reliant upon them. Produced by Squarefootphoto.co.uk



07591 006831
fernando.daotro@exp.uk.com