

## Chalfont Lane, Chorleywood

Guide Price £2,250,000

🛏 5 🚿 3 🚗 3



A beautiful Edwardian 5 bedroom detached family home on a desirable road in Chorleywood, dating back to the 1900s, blending historic charm with modern luxury.

## Key Features

- Detached Period Property
- Desirable Location
- Close to Excellent Schools
- Two Garages
- Lanscaped Garden
- 5 Bedrooms
- Exeptional Standard Throughout
- Rural Views
- Large Driveway

Approximate Gross Internal Area  
 Ground Floor = 156.0 sq m / 1,679 sq ft  
 First Floor = 114.6 sq m / 1,233 sq ft  
 Garages = 36.1 sq m / 388 sq ft  
 Total = 306.7 sq m / 3,300 sq ft

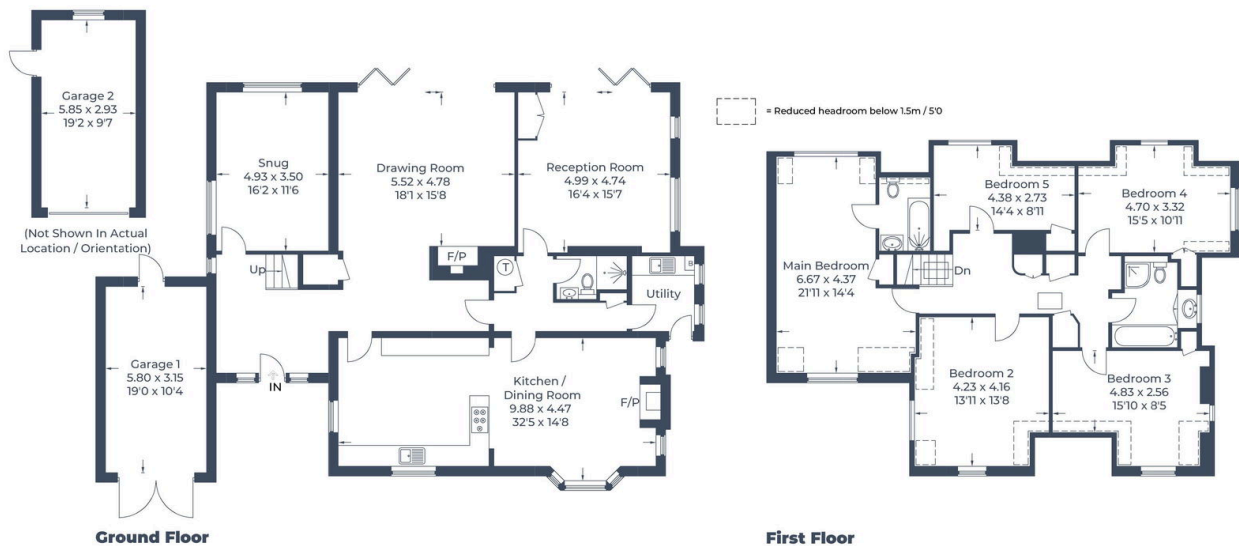


Illustration for identification purposes only,  
 measurements are approximate, not to scale.  
 © CJ Property Marketing Produced for EXP - Kate Woodward