

Lawrence Road, Wrington

£367,000

🛏 3 🚿 1 🛋 2

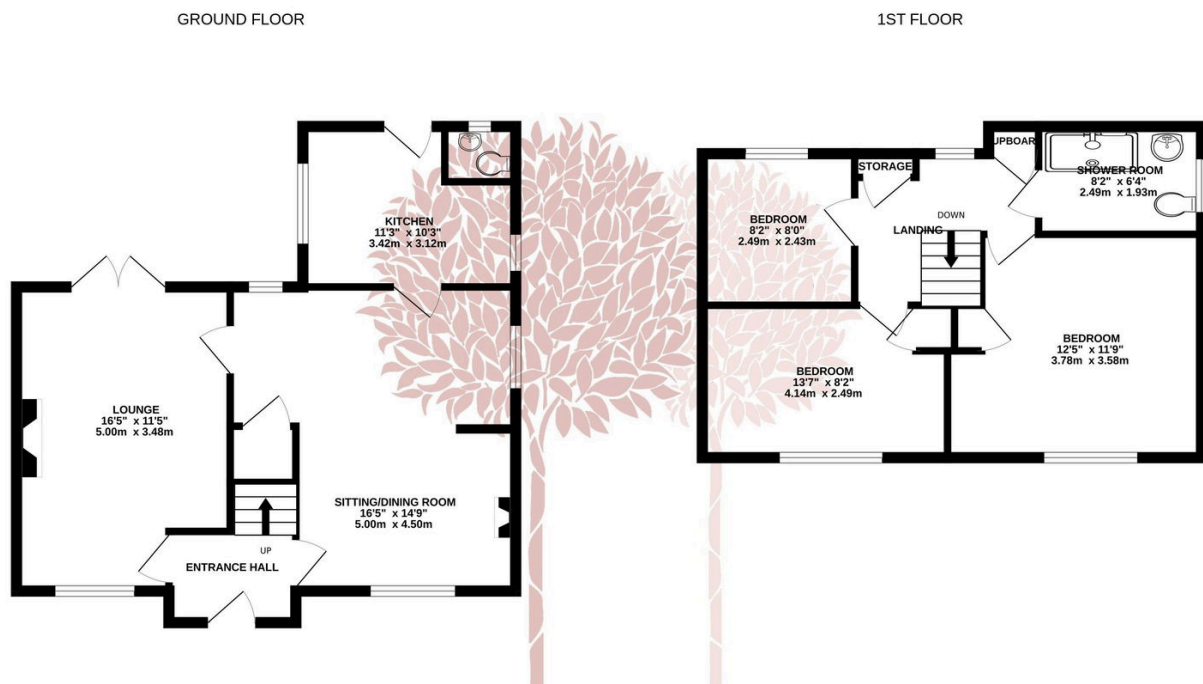


A lovely three bedroom semi-detached family home in the heart of the village within easy reach of amenities. The property is blessed with a large garden, plenty of off street parking and huge future potential.



Key Features

- Charming semi detached family home
- One of the largest plots on the road with a generous rear garden
- Convenient village location close to local schools and amenities
- Plenty of off street parking
- Sitting room and separate dining room
- Three bedrooms and family bathroom on the first floor
- Tasteful decoration throughout
- kitchen with handy ground floor cloakroom
- Council Tax Band B
- EPC rating pending



Whilst every attempt has been made to ensure the accuracy of the floorplan contained here, measurements of doors, windows, rooms and any other items are approximate and no responsibility is taken for any error, omission or mis-statement. This plan is for illustrative purposes only and should be used as such by any prospective purchaser. The services, systems and appliances shown have not been tested and no guarantee as to their operability or efficiency can be given.
Made with Metropix ©2025

