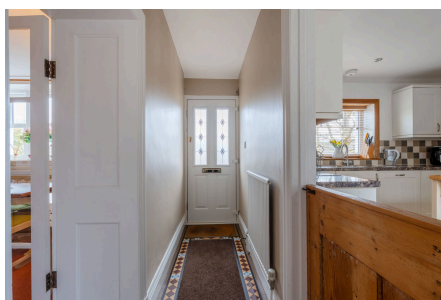


## Cheddarcombe Lane, Star

£675,000

🛏 4 🚗 2 🛋 3

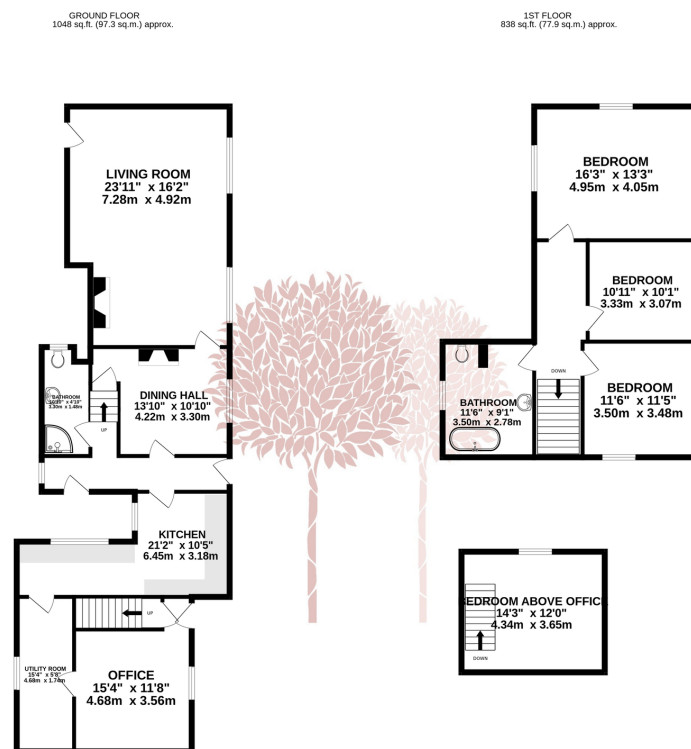


Occupying a picturesque semi-rural position on the Mendip Hills is this beautiful character cottage. Formally believed to have been two separate dwellings and a small chapel, the three now combine to make an enchanting detached family home with excellent versatility and as many as four bedrooms. There is a single garage, off street parking, a lovely rear garden with incredible views and the benefit of no onward chain.



## Key Features

- Detached period cottage
- Outstanding semi-rural position on a quiet no through lane
- Versatile accommodation with as many as four bedrooms
- Stunning dual aspect sitting room with inglenook fireplace
- Separate dining room and office/study
- Two well appointed bathrooms, family bathroom with gorgeous claw foot bath
- Single garage and off street parking
- Delightful gardens with exceptional countryside views
- Beautifully appointed throughout
- Potential to create a self contained annexe



TOTAL FLOOR AREA: 1886 sq.ft. (175.2 sq.m.) approx.  
Whilst every attempt has been made to ensure the accuracy of the description contained herein, measurements of doors, windows, rooms and any other items are approximate and no responsibility is taken for any error, omission or mis-statement. This plan is for illustrative purposes only and should be used as such by any prospective purchaser. The services, systems and appliances shown have not been tested and no guarantee as to their operability or efficiency can be given.  
Made with Metropix ©2025

