

## Fox Lane, Winscombe

£665,000

🛏 3 🚿 2 🚗 2

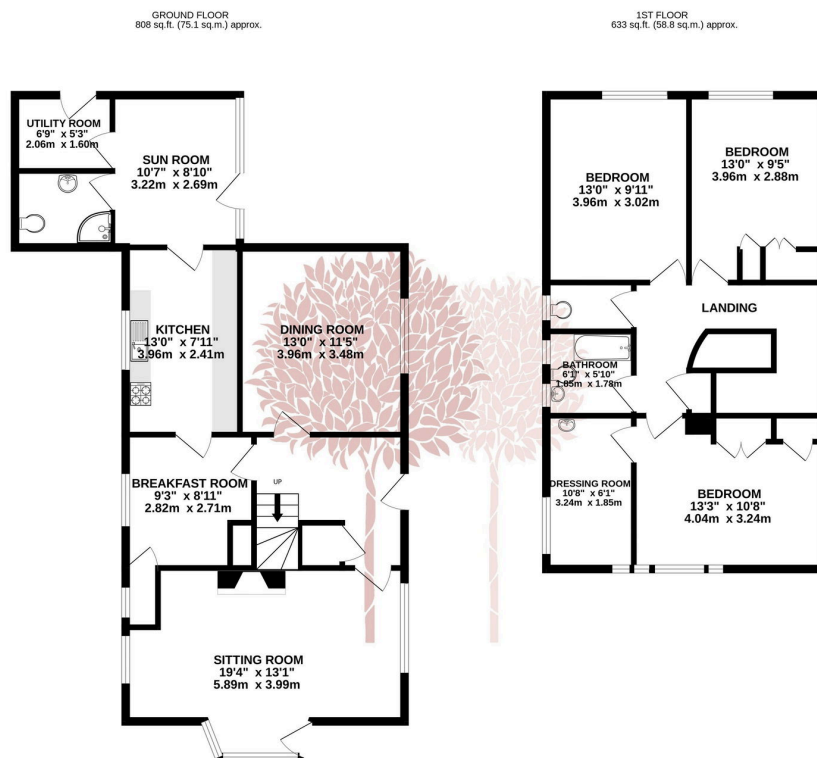


A handsome 1930's detached house set within approximately half an acre of beautiful grounds, on the outskirts of the popular village of Winscombe. The property is in need of some modernisation but offers huge potential and is brought to the market with the benefit of no onward chain.



## Key Features

- Delightful Character cottage just outside the popular village of Winscombe
- Wonderful opportunity to create your own dream home
- Three/four bedrooms
- Sitting room, dining room, breakfast room and sun room
- No onward chain complications
- In need of some modernisation
- Stunning parkland like setting of approximately half an acre
- Beautiful period feature
- Double garage plus generous off street parking



TOTAL FLOOR AREA: 1441 sq.ft. (133.9 sq.m.) approx.  
Whilst every attempt has been made to ensure the accuracy of the floorplan contained here, measurements of doors, windows, rooms and any other items are approximate and no responsibility is taken for any error, omission or mis-statement. This plan is for illustrative purposes only and should be used as such by any prospective purchaser. The services, systems and appliances shown have not been tested and no guarantee as to their operability or efficiency can be given.  
Made with Metropix i2025

