

## High Street, Claverham

£320,000

3 1 2

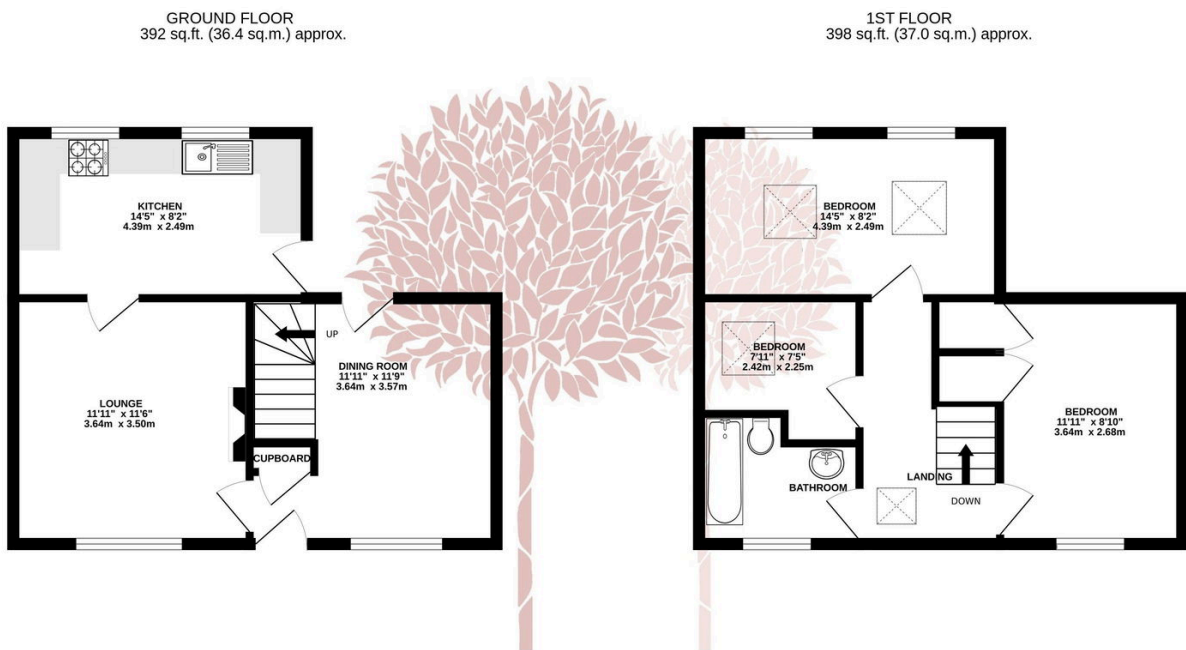


Number 16a High Street, Claverham is the prettiest of cottages and perfectly positioned in this sought after village. Having been lovingly looked after and updated by the current owners, the cottage now offers the quaintest accommodation set over two floors. This really is a "move in and enjoy" property, light the woodburner and put your feet up in the adorable surroundings of this three bedroomed house.



## Key Features

- Charming cottage in the heart of Claverham
- Two reception rooms and gorgeous kitchen
- Enclosed and private courtyard garden
- Beautifully presented throughout
- Close to Bristol Airport
- Three bedrooms
- Family Bathroom
- Timber garage
- Mainline train station in nearby Yatton
- EPC



TOTAL FLOOR AREA : 790 sq.ft. (73.4 sq.m.) approx.

Whilst every attempt has been made to ensure the accuracy of the floorplan contained here, measurements of doors, windows, rooms and any other items are approximate and no responsibility is taken for any error, omission or mis-statement. This plan is for illustrative purposes only and should be used as such by any prospective purchaser. The services, systems and appliances shown have not been tested and no guarantee as to their operability or efficiency can be given.  
Made with Metropix ©2025

