

Moorhen Road, Yatton

£399,950

🛏 3 🚿 2 🚺 1



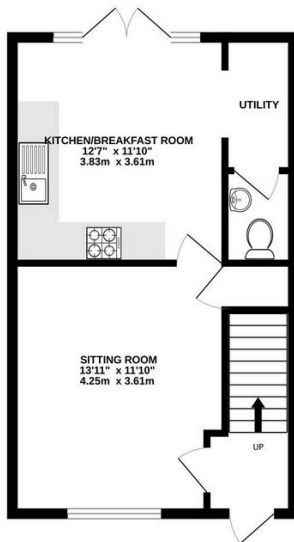
Number 79 Moorhen Road is an elegant three storey townhouse built approximately five years ago by Bloor Homes positioned in what is quickly becoming a sought after residential area in the already popular village of Yatton. With the mainline railway station being within a level walk, a brand new primary school within a stone's throw and a new local supermarket being built nearby, the opportunity to secure a house in this part of the village is extremely exciting. This family home has been owned since new by the present owners who have enjoyed bringing their children up in a well thought through attractive house. We are delighted to bring number 79 to the market and very much look forward to showing you around.



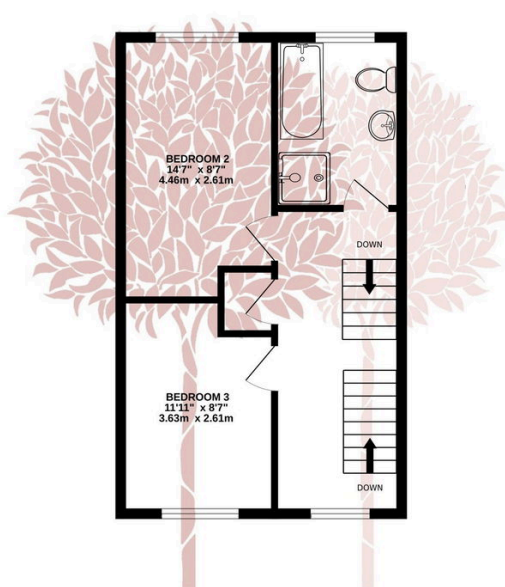
Key Features

- Three Storey family Home on the edge of Yatton
- Gas Central Heating
- Garage and driveway parking for three cars with an EV charging point
- Two further Double Bedrooms and Family Bathroom with separate shower
- Sitting room with open aspect to the front
- A stone's throw from Chestnut Park Primary School
- Enclosed south-facing rear garden
- Wonderful Principal Bedroom with built in wardrobes, ensuite and powder room
- Kitchen with utility nook and downstairs Cloakroom
- 15-minute walk to Yatton Train Station

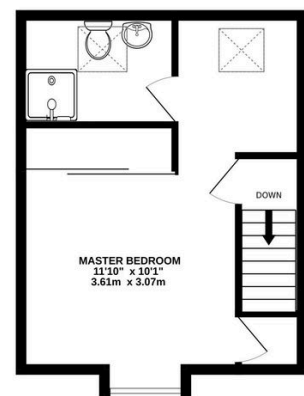
GROUND FLOOR
415 sq.ft. (38.6 sq.m.) approx.



1ST FLOOR
415 sq.ft. (38.6 sq.m.) approx.



2ND FLOOR
315 sq.ft. (29.2 sq.m.) approx.



TOTAL FLOOR AREA : 1145 sq.ft. (106.4 sq.m.) approx.

Whilst every attempt has been made to ensure the accuracy of the floorplan contained here, measurements of doors, windows, rooms and any other items are approximate and no responsibility is taken for any error, omission or mis-statement. This plan is for illustrative purposes only and should be used as such by any prospective purchaser. The services, systems and appliances shown have not been tested and no guarantee as to their operability or efficiency can be given.
Made with Metropix ©2025

