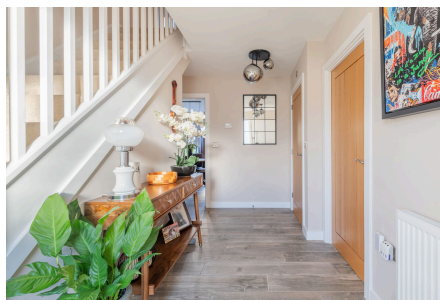
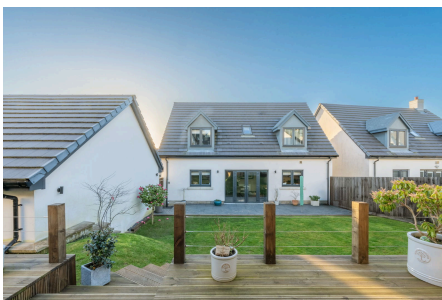


Wentwood Drive, Bleadon

£560,000

🛏 4 🚗 2 🚲 3

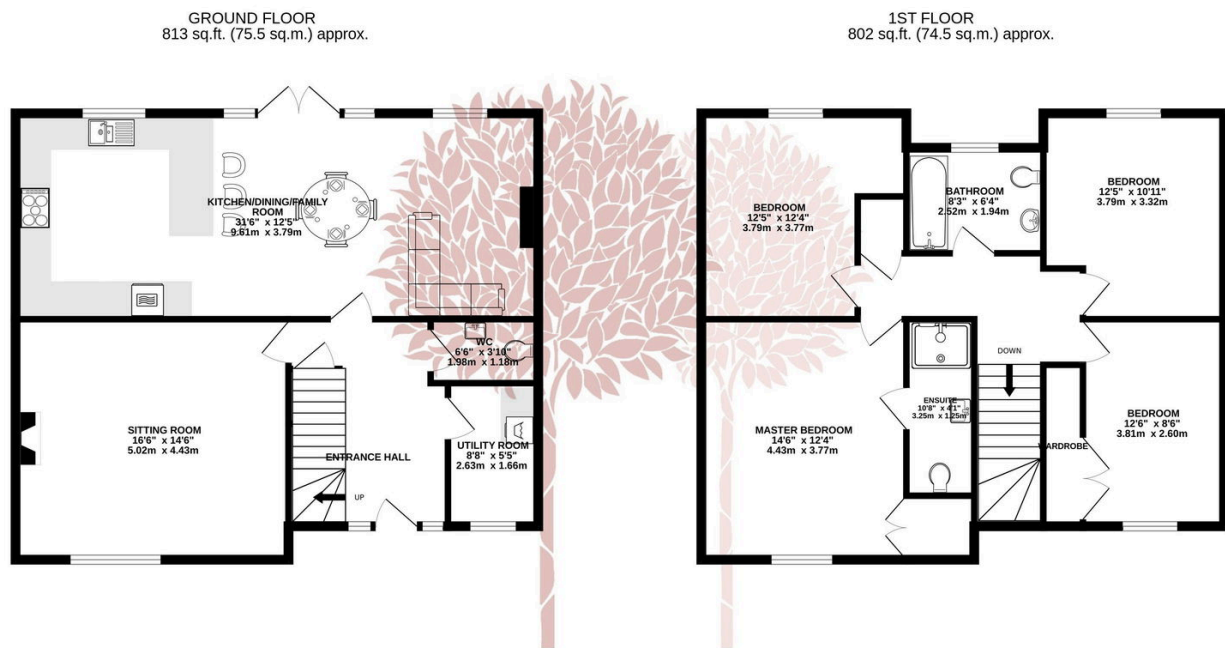


A superb four double bedroom detached contemporary home, occupying a stunning hillside position within the acclaimed 'Keepers Gate' development in desirable Bleadon. Much improved by the current owners, the property offers a sophisticated interior, generously proportioned rooms, beautifully landscaped garden, generous parking, excellent eco-credentials and a large single garage.



Key Features

- Exceptional presented detached contemporary home
- Highly sought after location on the slopes of Bleadon Hill
- Westerly facing sitting room with feature fireplace
- Landscaped rear garden with superb raised deck
- Energy efficient B rating with remainder of a 10 year NHBC guarantee
- Four double bedrooms (master en-suite), beautiful family bathroom and ground floor cloakroom
- Outstanding 30' kitchen/dining/family room
- Ample off street parking and large single garage/workshop
- Breath taking far reaching views from the first floor out towards the Bristol Channel
- Quiet cul de sac position



TOTAL FLOOR AREA: 1615 sq.ft. (150.0 sq.m.) approx.

Whilst every attempt has been made to ensure the accuracy of the floorplan contained here, measurements of doors, windows, rooms and any other items are approximate and no responsibility is taken for any error, omission or mis-statement. This plan is for illustrative purposes only and should be used as such by any prospective purchaser. The services, systems and appliances shown have not been tested and no guarantee as to their operability or efficiency can be given.
Made with Metropix ©2025

