

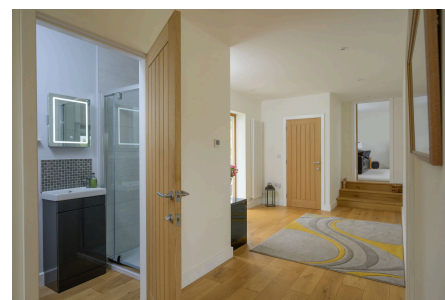
debbie fortune

ESTATE AGENTS

Ropers Lane, Wroughton

£1,185,000

🛏 5 🚿 3 🛋 3



An exceptional five bedroom detached contemporary house that has been completely remodelled, refurbished and enhanced over recent years to create what is now a superb bespoke family home situated in one of Wroughton's most desirable roads.



Key Features

- Exceptional detached contemporary home
- Five bedrooms/three bathrooms/ including master en-suite
- Stunning designer kitchen/dining room that links through to a superb family room
- Double garage plus parking for at least four vehicles
- EPC rating C
- Situated on one of Wrington's finest roads
- Beautiful panoramic views over the village towards the Mendip Hills
- Separate dual aspect living room with stunning views
- Close to the excellent local amenities including primary school, village store, public houses and cafe
- Council Tax Band F

Lowood Ropers Lane, Bristol

Gross Internal Area (Approx.)
Main House = 250 sq m / 2,693 sq ft
Garage = 40 sq m / 430 sq ft
Total Area = 290 sq m / 3,123 sq ft

