

## Sheppys Mill, Congresbury

£205,000

🛏 2 🚿 2 🛋 1



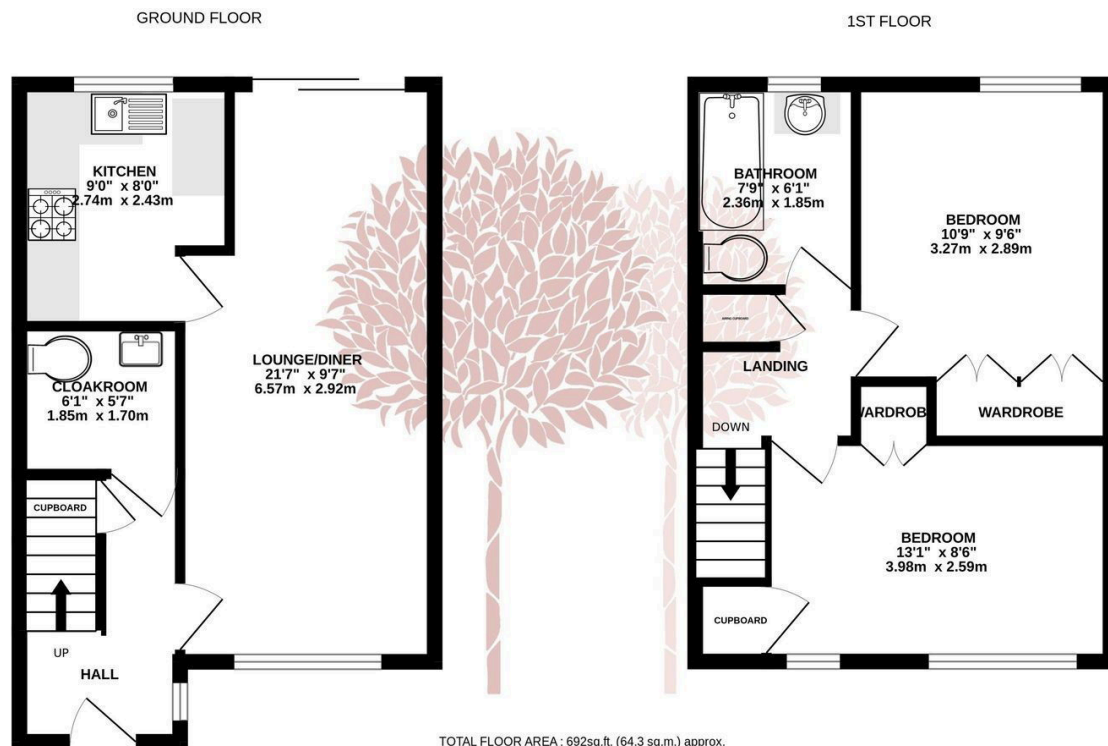
A pretty mid terraced, two bed roomed, property set in a convenient location within the village for the over 60's. The property benefits from a private and leafy outlook and allocated off street parking hugely benefits the house.

We welcome 9 Sheppy's Mill to the market and very much look forward to showing you around, please don't hesitate to call our friendly team who can quickly arrange a viewing on your behalf.



## Key Features

- EPC rating C
- Council Tax Band C
- Front and rear gardens
- Allocated parking space
- Short walk to the village amenities
- Short walk to the village amenities
- Two bedroom terraced home for the over 60's
- 
- 



TOTAL FLOOR AREA : 692sq.ft. (64.3 sq.m.) approx.

Whilst every attempt has been made to ensure the accuracy of the floorplan contained here, measurements of doors, windows, rooms and any other items are approximate and no responsibility is taken for any error, omission or mis-statement. This plan is for illustrative purposes only and should be used as such by any prospective purchaser. The services, systems and appliances shown have not been tested and no guarantee as to their operability or efficiency can be given.

Made with Metropix ©2023

