


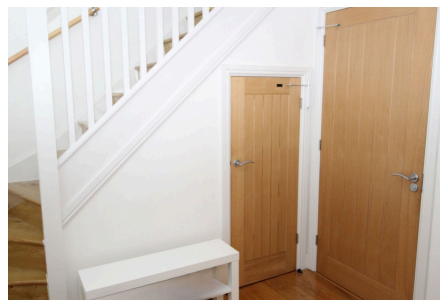


## Three Acres Court, Churchill

£625,000

 4  3  2



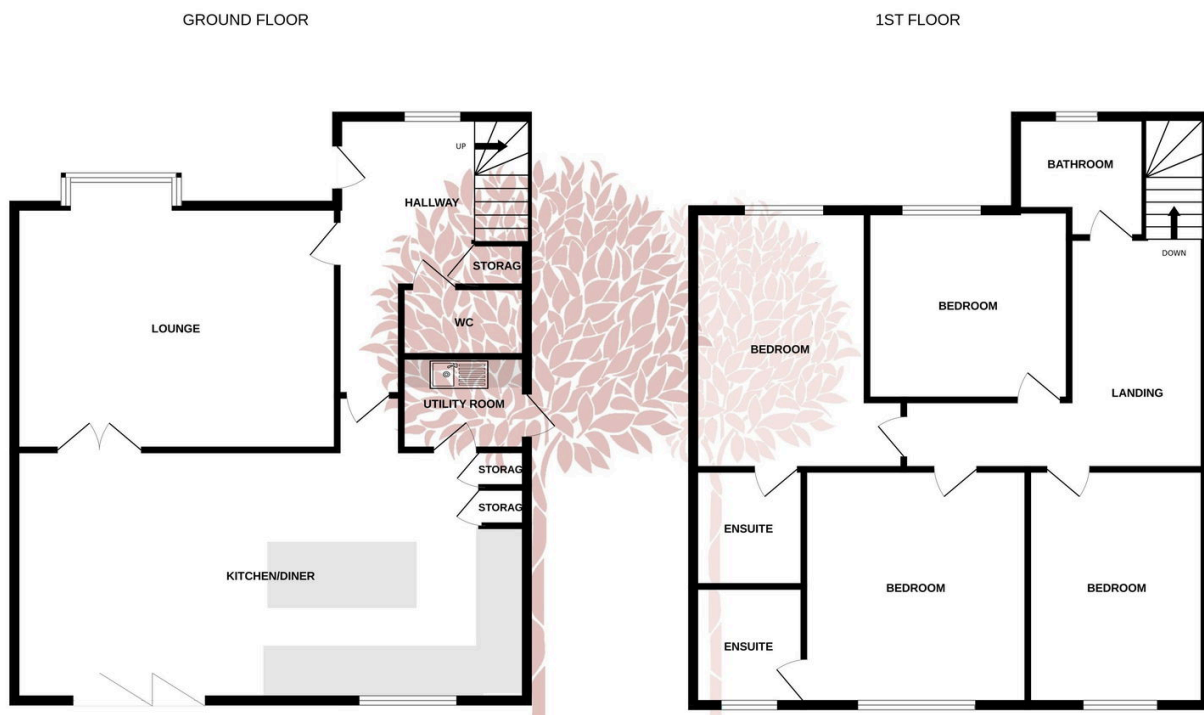
Number one Three Acres Court is an immaculate four bedroomed executive family home in the heart of the sought after village of Churchill. The property isn't only spacious but also hugely benefits from very attractive wraparound gardens and a generous double garage with potential to convert with the relevant planning consent.

We are delighted to bring this beautiful home to the market and very much look forward to showing you around, please don't hesitate to call our friendly team to arrange a viewing.



## Key Features

- Beautifully Presented, Immaculate Family Home
- Wraparound Landscaped Gardens
- Detached Double Garage with Large Mezzanine studio above
- Four Generous Bedrooms and Two Ensuites
- Energy Performance Rating B
- Sought After Location in Churchill
- Just Four Years Old
- Beautifully executed kitchen/dining and family room
- A 'must view' house
- Council Tax Band TBC



Whilst every attempt has been made to ensure the accuracy of the floorplan contained here, measurements of doors, windows, rooms and any other items are approximate and no responsibility is taken for any error, omission or mis-statement. This plan is for illustrative purposes only and should be used as such by any prospective purchaser. The services, systems and appliances shown have not been tested and no guarantee as to their operability or efficiency can be given.  
Made with Metropix ©2025

