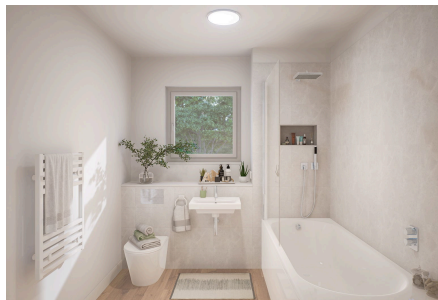


Greenhill Road, Sandford

£495,000

3 2 2



Meadow Gate - A distinctive and innovative collection of just 49 sustainable homes set in the heart of pretty North Somerset built by renowned developers, Stonewood Homes. Nestled on the northern edge of the Mendip Hills, this thoughtfully crafted development blends rural charm with modern living, offering a range of two to four bedroomed homes built with energy efficiency and contemporary comfort in mind. With excellent local amenities, scenic countryside on your doorstep and easy access to the North Somerset coast, Bristol and the M5, Meadow Gate is the perfect place to put down roots and embrace a greener way of living.



debbie fortune

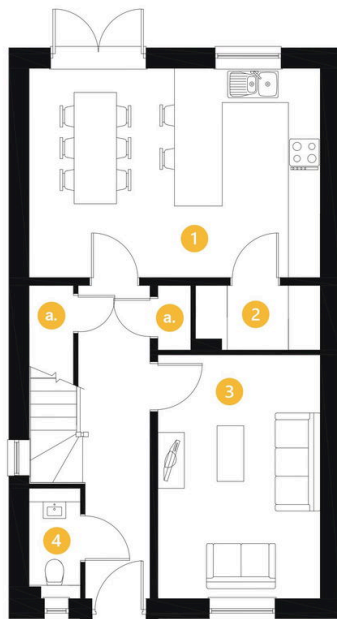
ESTATE AGENTS

Phase 1 of Meadow Gate in Sandford has just launched. Call our friendly sales team who would be delighted to register your interest prior to the much anticipated opening of the Show Home in April 2025. Don't miss this exciting opportunity to make Meadow Gate your next move, providing your family with their very best life.

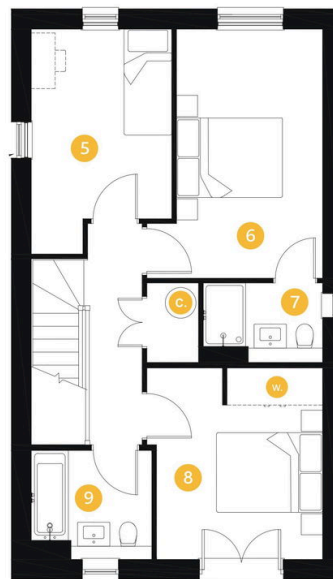


Key Features

- Reserve now and choose your kitchen, tiles and flooring.
- Design led and forward thinking interiors
- Phase One just launched - due to complete late Summer 2025
- Downstairs cloakroom and WC
- Sustainable features including Solar Panels and Air Source Heat Pumps
- Stunning modern handleless kitchens in a range of colours.
- Contemporary sanitaryware, shower niches to en-suites & bathrooms
- High end integrated appliances including dishwasher
- En suite to principal bedroom with clean lines
- Driveway parking with EV Charger



GF



FF

Ground Floor

1. Kitchen/Dining
5.5m x 3.9m / 18'0" x 12'11"
2. Utility
2.5m x 1.2m / 8'4" x 4'0"
3. Living Room
4.6m x 3.1m / 15'1" x 10'1"
4. W/C
2.1m x 1.0m / 6'10" x 3'2"
- a. Storage

First Floor

5. Bedroom 3
4.2m x 2.7m / 13'11" x 8'8"
6. Bedroom 1
4.7m x 3.3m / 15'5" x 10'10"
7. En-suite
2.3m x 1.5m / 7'5" x 4'9"
8. Bedroom 2
3.6m x 3.3m / 11'10" x 10'10"
9. Bathroom
2.3m x 2.1m / 7'6" x 6'9"
- w. Built-in Wardrobe

Available as:
• Detached with driveway

