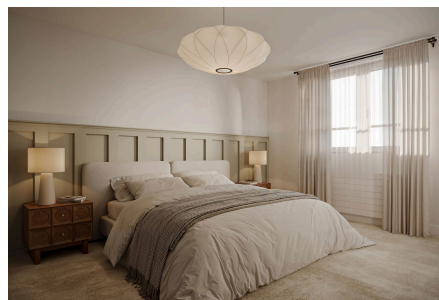


Greenhill Road, Sandford

£700,000

4 2 3



Meadow Gate - A distinctive and innovative collection of just 49 sustainable homes set in the heart of pretty North Somerset built by renowned developers, Stonewood Homes. Nestled on the northern edge of the Mendip Hills, this thoughtfully crafted development blends rural charm with modern living, offering a range of two to four bedroomed homes built with energy efficiency and contemporary comfort in mind. With excellent local amenities, scenic countryside on your doorstep and easy access to the North Somerset coast, Bristol and the M5, Meadow Gate is the perfect place to put down roots and embrace a greener way of living.



debbie fortune

ESTATE AGENTS

Phase 1 of Meadow Gate in Sandford has just launched. Call our friendly sales team who would be delighted to register your interest prior to the much anticipated opening of the Show Home in April 2025. Don't miss this exciting opportunity to make Meadow Gate your next move, providing your family with their very best life.



Key Features

- Spacious double fronted family home with south facing garden.
- Stunning modern handleless kitchens in a range of colours.
- Phase One just launched - due to complete late Summer 2025.
- Just three of this house type available at Meadow Gate
- Sustainable features including Solar Panels and Air Source Heat Pumps.
- Reserve now and choose your kitchen, tiles and flooring.
- Contemporary sanitaryware, shower niches to en-suites & bathrooms.
- High end integrated appliances including dishwasher.
- En suite to principal bedroom with clean lines.
- Garage and parking spaces with EV Chargers

All floor plans and computer-generated images are for illustrative purposes only. All measurements, sizes, kitchen layout and furniture positions are for indicative purposes only. All floor plans are not shown to scale. External materials, finishes, landscaping and the position of gardens where provided may vary throughout the development. Properties may also be built to a different design. Please ask for further details.



GF



FF

Ground Floor

1. Living Room
4.4m x 3.3m / 14'5" x 10'9"
2. Kitchen/Dining/Family
9.0m x 4.9m / 29'6" x 15'11"
3. Utility
2.4m x 1.7m / 7'10" x 5'8"
4. W/C
1.8m x 1.4m / 5'11" x 4'7"
5. Study
3.2m x 1.9m / 10'6" x 6'3"

a. Storage

First Floor

6. Bedroom 1
5.4m x 3.3m / 17'8" x 10'11"
7. En-suite
2.4m x 1.5m / 7'10" x 4'11"
8. Bedroom 2
3.8m x 3.2m / 12'7" x 10'7"
9. Bedroom 3
3.8m x 3.2m / 12'8" x 10'7"
10. Bathroom
2.3m x 2.0m / 7'5" x 6'7"
11. Bedroom 4
2.3m x 3.3m / 7'7" x 10'11"

w. Built-in Wardrobe

Available as:

- Detached with garage and driveway

