




# debbie fortune

ESTATE AGENTS

## Claverham Road, Claverham

£665,000

 4  2  2

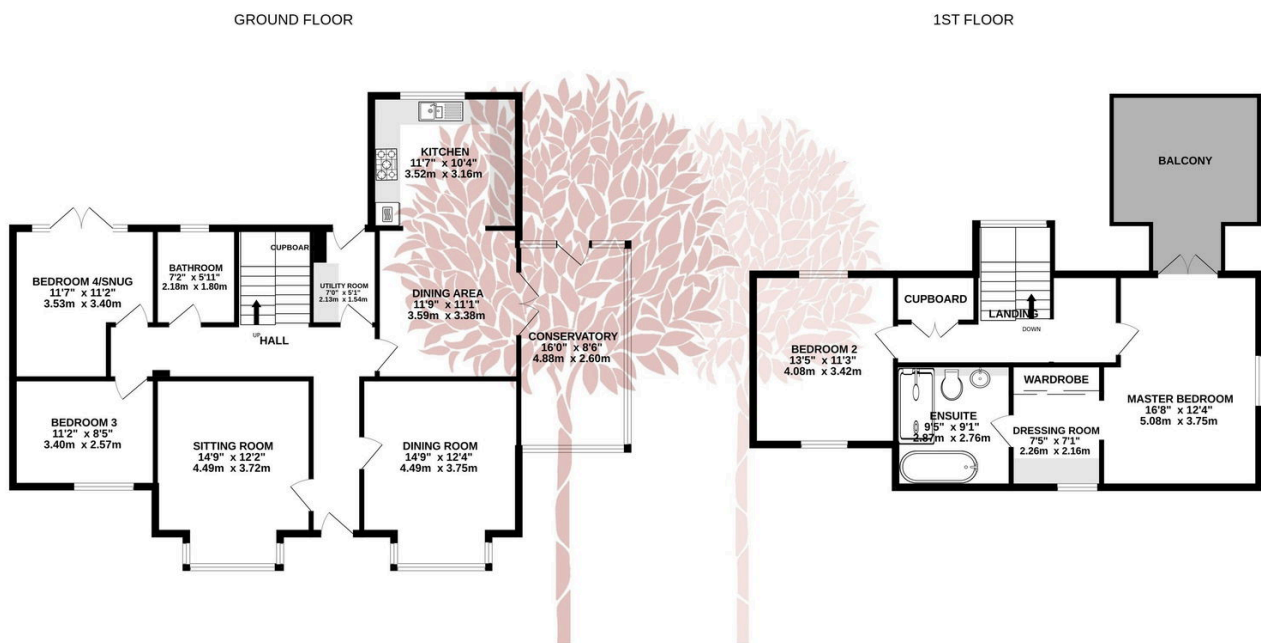


**STUNNING VIEWS** - Nestled in a peaceful rural setting, this spacious and charming 1930s detached dormer bungalow offers a perfect blend of period elegance and modern comfort. Featuring four generously sized bedrooms, ample parking, and a beautifully landscaped south-facing garden, this versatile home is ideal for families or anyone seeking a tranquil semi-rural lifestyle.



## Key Features

- Stunning enclosed south facing garden
- Large double garage
- Striking views across the countryside
- EPC rating D
- 1934sq.ft
- Parking for 10+ cars
- Stylish interior blending character features with a modern contemporary twist
- Backwell School catchment
- Countryside walks near by
- Easy access to Bristol and Weston



TOTAL FLOOR AREA : 1954sq.ft. (181.5 sq.m.) approx.

Whilst every attempt has been made to ensure the accuracy of the floorplan contained here, measurements of doors, windows, rooms and any other items are approximate and no responsibility is taken for any error, omission or mis-statement. This plan is for illustrative purposes only and should be used as such by any prospective purchaser. The services, systems and appliances shown have not been tested and no guarantee as to their operability or efficiency can be given.  
Made with Metropix ©2025

