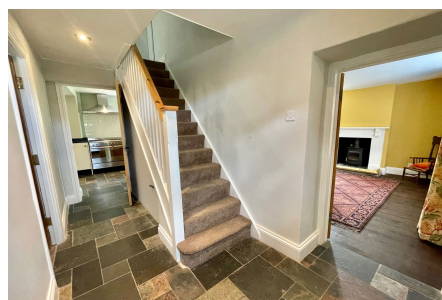


Butham Lane, Chew Magna

Guide Price £720,000

🛏 5 🍷 2 🛋 3



NO ONWARD CHAIN - A stone-built refurbished old public house situated away in a secluded corner of Chew Magna's highly popular village. The home features well-proportioned rooms and characterful feel, as well as a garden, parking, and a cart house, perfect for storage. A stunning property that will suit growing families. EPC rating D.



Key Features

- NO ONWARD CHAIN
- Open plan kitchen/breakfast room
- Walking distance to village amenities
-
-
- Five well-proportioned bedrooms
- Off street parking and garaging
- Secluded position within the village
-
-



TOTAL FLOOR AREA: 1401 sq.ft. (130.2 sq.m.) approx.

Whilst every attempt has been made to ensure the accuracy of the floorplan contained here, measurements of doors, windows, rooms and any other items are approximate and no responsibility is taken for any error, omission or mis-statement. This plan is for illustrative purposes only and should be used as such by any prospective purchaser. The services, systems and appliances shown have not been tested and no guarantee as to their operability or efficiency can be given.
Made with Metropix ©2022

