

debbie fortune

ESTATE AGENTS

Front Street, Churchill

£599,950

 5  3  4

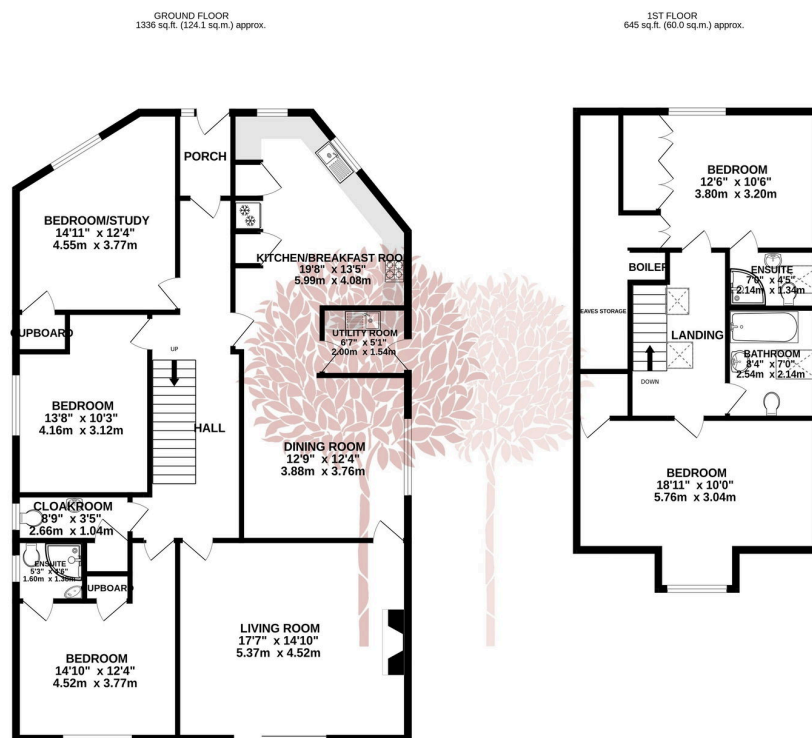


INCREDIBLY SPACIOUS FIVE BED - Occupying a discrete private position in the heart of the popular village of Churchill is 'Yew Tree House', a substantial five bedroom detached house offering versatile accommodation perfectly suited to family life.



Key Features

- Substantial detached family home in a discrete peaceful location
- Superb contemporary kitchen leading to a dining room/snug
- Generous off-street parking plus single garage
- Beautiful south/west facing landscaped garden with views to the Mendip Hills
- Council Tax Band
- Four/Five bedrooms with three well-appointed bathrooms
- Large sitting room with sliding doors to the garden
- Nearly 2000 sq ft of accommodation
- Wonderfully positioned close to local amenities and Churchill Academy and 6th Form
- EPC rating



TOTAL FLOOR AREA: 1982 sq. ft. (184.1 sq.m.) approx.
 Whilst every attempt has been made to ensure the accuracy of the floorplans contained here, measurements of doors, windows, rooms and any other items are approximate and no responsibility is taken for any error, omission or mis-statement. This plan is for illustrative purposes only and should be used as such by any prospective purchaser. The services, systems and appliances shown have not been tested and no guarantee as to their operability or efficiency can be given.
 Made with Metroplan ©2023

