

## Middle Street, East Harptree

Offers Over £330,000

🛏 2 🍽 1 🛋 2

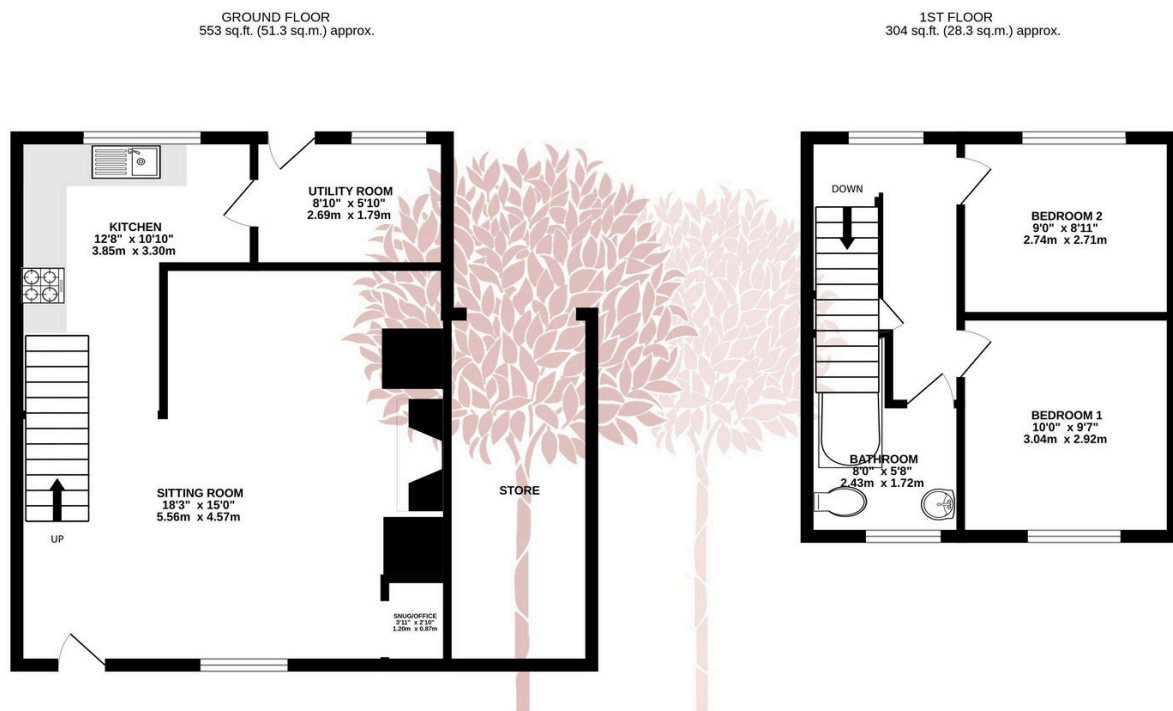


**PERIOD COTTAGE NO CHAIN** Enchanting two bedroom end terrace period cottage set in a lovely rural position in the popular village of East Harptree. The property is blessed with gorgeous original features and yet has been sympathetically modernised in recent years. Sumac Cottage has the added advantage of two parking spaces and no onward chain.



## Key Features

- Beautiful chocolate box period cottage
- Character features throughout including a stunning inglenook fireplace
- Modernised and redecorated in recent years
- Wonderful edge of village position
- EPC D
- Two double bedrooms and first floor bathroom
- Allocated off street parking for two vehicles
- Snug/Home office
- No onward chain complications
- Council Tax Band D



TOTAL FLOOR AREA : 857 sq.ft. (79.6 sq.m.) approx.

Whilst every attempt has been made to ensure the accuracy of the floorplan contained here, measurements of doors, windows, rooms and any other items are approximate and no responsibility is taken for any error, omission or mis-statement. This plan is for illustrative purposes only and should be used as such by any prospective purchaser. The services, systems and appliances shown have not been tested and no guarantee as to their operability or efficiency can be given.  
Made with Metropix ©2024.

