

Summerleaze, Bishop Sutton

Guide Price £340,000

🛏 3 🚗 2 🚗 1

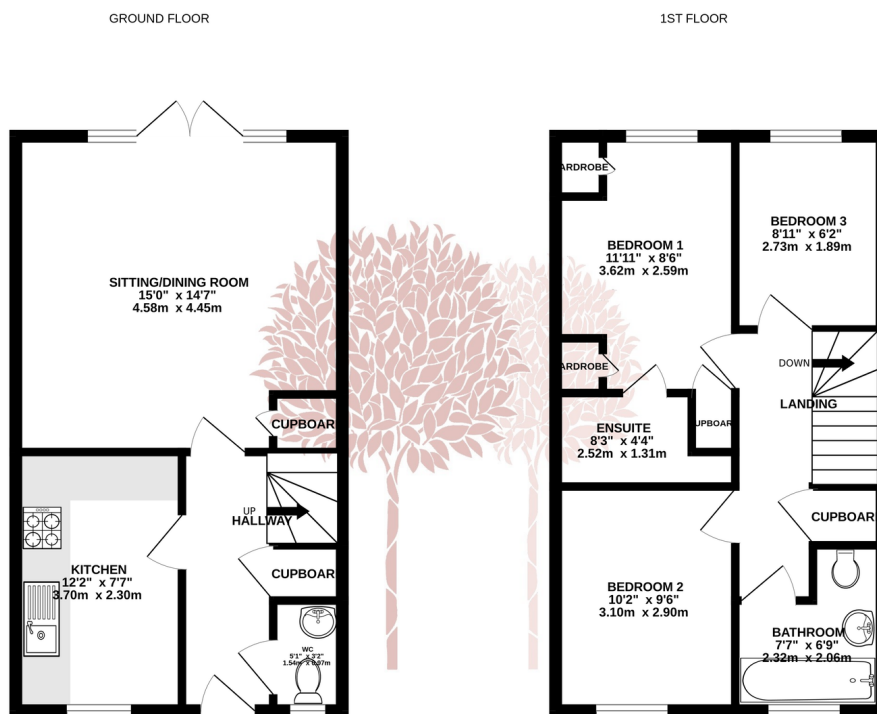


This spacious three-bedroom home in Bishop Sutton is well-presented and offers more than meets the eye. Located within easy commuting distance of Bristol, Bath, and Wells and within walking distance to village amenities, it's the perfect blend of convenience and comfort.



Key Features

- Modern three bedroom, mid-terraced house
- Master bedroom with en suite shower room
- Secure rear garden
- Downstairs WC
- EPC rating B
- Contemporary interior
- Chew Valley School catchment area
- Sitting room with double doors to garden
- Council Tax Band D
- Close to amenities



Whilst every attempt has been made to ensure the accuracy of the floorplan contained here, measurements of doors, windows, rooms and any other items are approximate and no responsibility is taken for any error, omission or mis-statement. This plan is for illustrative purposes only and should be used as such by any prospective purchaser. The services, systems and appliances shown have not been tested and no guarantee as to their operability or efficiency can be given.
Made with Metropix ©2025

