

debbie fortune

ESTATE AGENTS

Manor Farm Crescent, Weston-super-Mare

£189,950

🛏️ 2 🚿 1 🚗 1



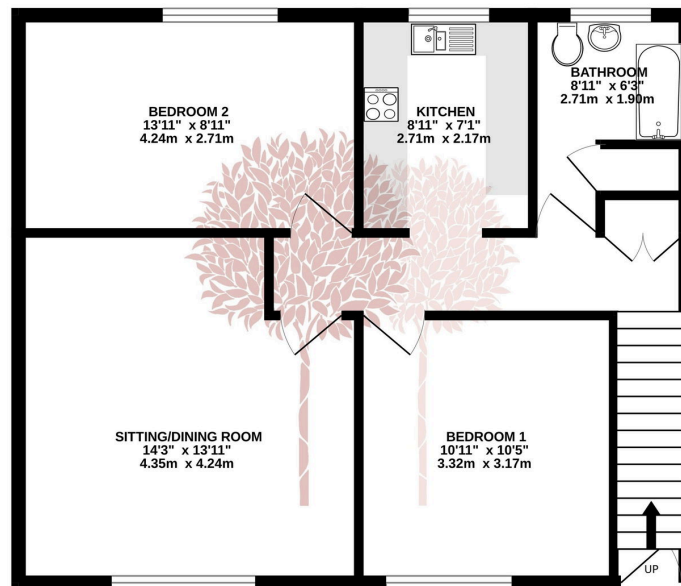
A super opportunity to purchase a spacious two bedroom first floor flat in a popular residential location, which comes with the benefit of a private garden, a single garage and no onward chain.



Key Features

- No onward chain complications
- Private rear garden
- Single garage with new door
- Spacious sitting room
- Two good sized double bedrooms
- Popular residential location
- Purpose built first floor flat
- EPC rating C
- Council Tax Band A

GROUND FLOOR
631 sq.ft. (58.6 sq.m.) approx.



TOTAL FLOOR AREA: 631 sq.ft. (58.6 sq.m.) approx.
Whilst every attempt has been made to ensure the accuracy of the floorplan contained herein, measurements of doors, windows, rooms and any other items are approximate and no responsibility is taken for any error, omission or mis-statement. This plan is for illustrative purposes only and should be used as such for any prospective purchaser. The services, systems and appliances shown have not been tested and no guarantee as to their quality or efficiency can be given.
Made with Metropix ©2024

