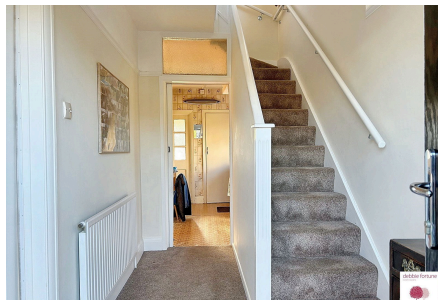


Derham Park, Yatton

£399,950

3 0 2

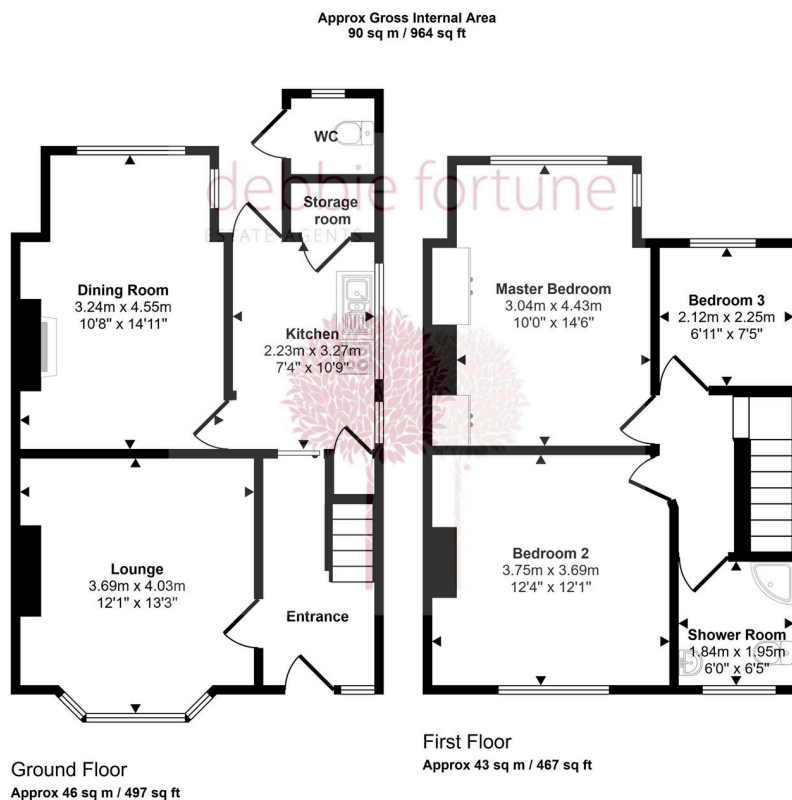


A wonderful opportunity to purchase a superbly positioned three bedroom semi-detached home in a superb convenient position in Yatton. Situated just off the High Street, 14 Derham Park offers exceptional potential for a buyer to modernised and extend (subject to the necessary consents) into the generous rear garden to create their own dream home.



Key Features

- No onward chain
- Three bedroom semi detached family home
- Sitting and Dining rooms, plus galley kitchen with pantry
- Huge scope to extend and improve (subject to the necessary consents)
- Superb corner plot with large sunny garden
- Generous off street parking
- Convenient village position close to local amenities
- Council Tax Band D
- EPC rating D



This floorplan is only for illustrative purposes and is not to scale. Measurements of rooms, doors, windows, and any items are approximate and no responsibility is taken for any error, omission or mis-statement. Icons of items such as bathroom suites are representations only and may not look like the real items. Made with Made Snappy 360.

