

debbie fortune

ESTATE AGENTS

Potters View, Congresbury

£575,000

🛏 4 🚿 2 🚗 1

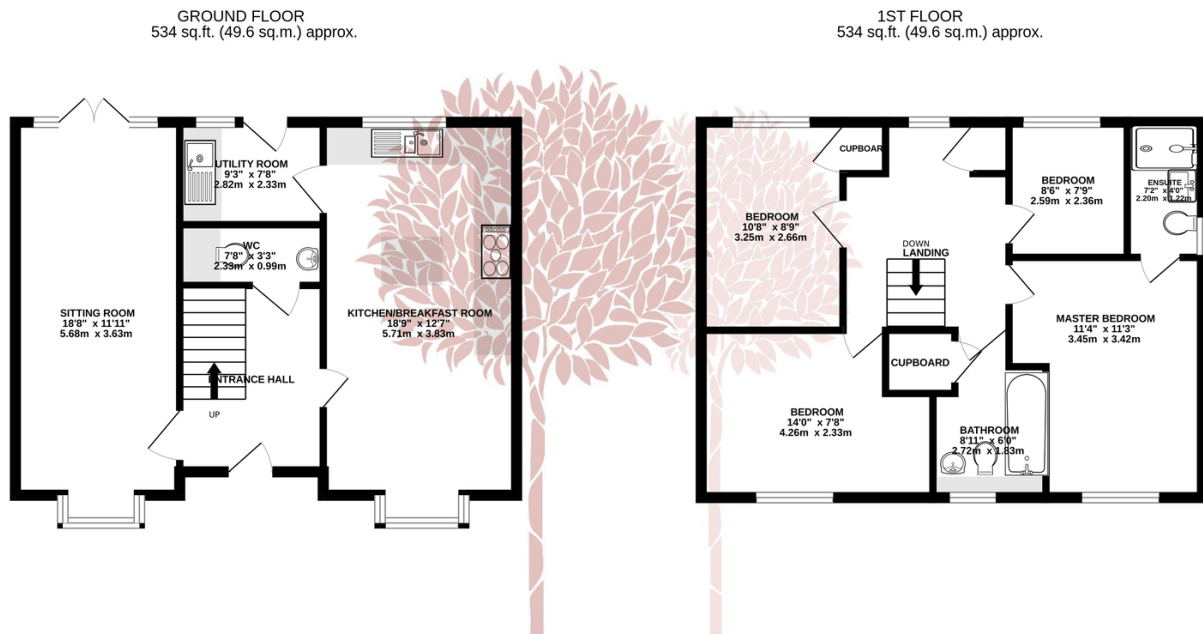


COUNTRYSIDE VIEWS - An exceptionally well presented four-bedroom detached house, occupying arguably one of the best positions within Potters View, an exclusive cul de sac of just a handful of beautiful modern homes constructed in 2019 by Strongvox Homes. EPC rating B.



Key Features

- Beautifully presented four-bedroom detached family home
- Stylish interior with chic modern decoration
- Contemporary family bathroom and en-suite
- Dual aspect sitting room with stylish colonial shutters & bi-fold doors to the garden
- EPC rating B
- Superb position with lovely countryside views to the rear
- Huge double garage/workshop and driveway parking for four cars
- Fantastic modern kitchen with island unit and quality appliances
- Generous rear garden featuring a lovely pergola, patios, raised beds and lawn
- Council Tax Band E



TOTAL FLOOR AREA : 1068 sq.ft. (99.2 sq.m.) approx.

Whilst every attempt has been made to ensure the accuracy of the floorplan contained here, measurements of doors, windows, rooms and any other items are approximate and no responsibility is taken for any error, omission or mis-statement. This plan is for illustrative purposes only and should be used as such by any prospective purchaser. The services, systems and appliances shown have not been tested and no guarantee as to their operability or efficiency can be given.
Made with Metroplex ©2024.

