

## Cross Farm Road, Draycott

Guide Price £375,000

 4  2  2



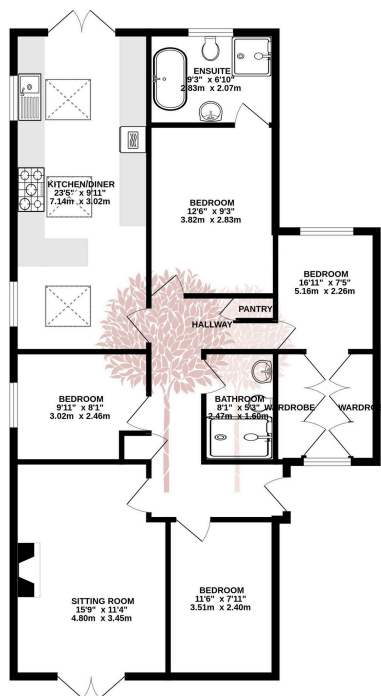
**EXTREMELY SPACIOUS FOUR BEDROOM BUNGALOW** set in a quiet cul-de-sac position in the popular Mendip village of Draycott.



## Key Features

- EPC rating B
- Large driveway with parking for several cars
- Workshop with ramp access
- Summerhouse with Hot Tub
- Secluded courtyard style back garden over two levels with various seating areas
- Lovely sitting room with veranda
- Extended kitchen with dining space
- Shower room and ensuite bathroom
- Four double bedrooms
- No onward chain

GROUND FLOOR  
1069 sq.ft. (99.3 sq.m.) approx.



TOTAL FLOOR AREA: 1069 sq.ft. (99.3 sq.m.) approx.

Whilst every attempt has been made to ensure the accuracy of the floorplans contained here, measurements of doors, windows, rooms and any other items are approximate and no responsibility is taken for any error, omission or mis-statement. This plan is for illustrative purposes only and should be used as such by any prospective purchaser. The services, systems and appliances shown have not been tested and no guarantee as to their operability or efficiency can be given.  
Made with Metropix (2024)

