

debbie fortune

ESTATE AGENTS

Princes Court, Yatton

£445,000

4 2 2

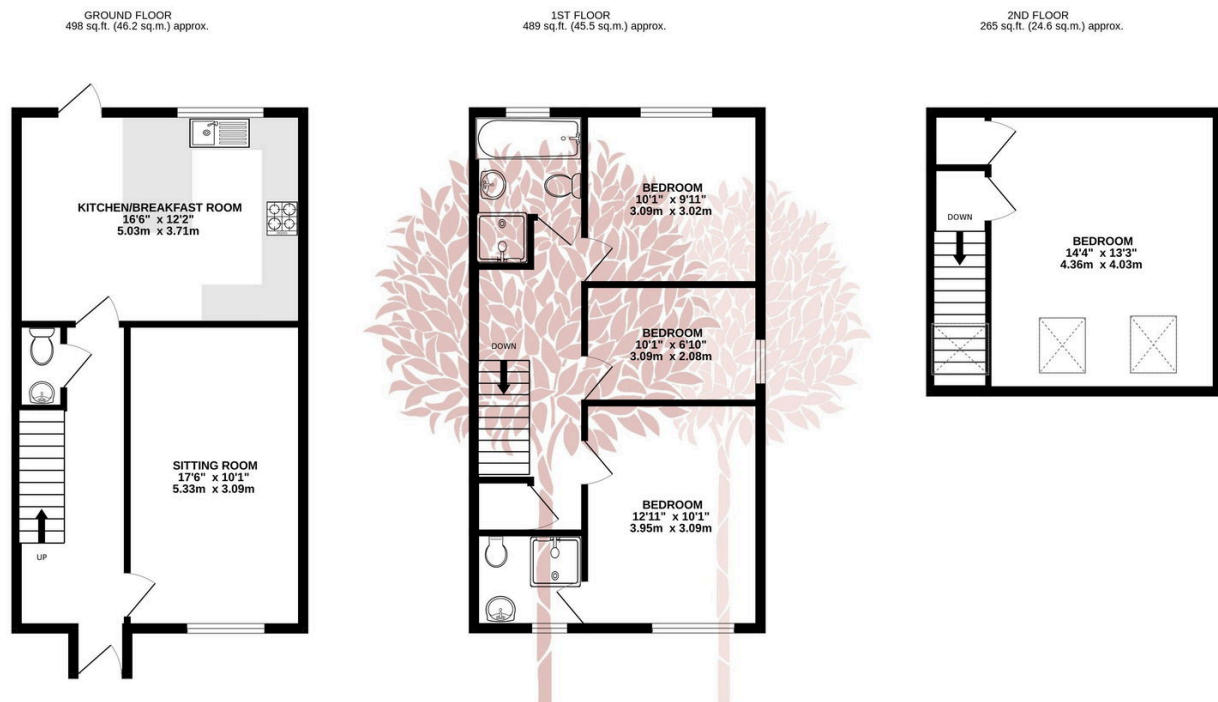


Beautifully presented four bedroomed mews property in the heart of Yatton sitting perfectly within a small courtyard development of just six family homes.



Key Features

- Four bedrooms
- Generous south facing rear gardens
- Generous sitting room overlooking courtyard
- A stone's throw from the amenities in Yatton and walking distance to Yatton Train Station
- Family bathroom with separate walk in shower
- Stunning kitchen with integrated appliances and solid worktops
- Master bedroom with ensuite shower room
- Parking for two cars
- Accommodation set over three floors
- Solar panels



TOTAL FLOOR AREA: 1252 sq.ft. (116.3 sq.m.) approx.

Whilst every attempt has been made to ensure the accuracy of the floorplan contained here, measurements of doors, windows, rooms and any other items are approximate and no responsibility is taken for any error, omission or mis-statement. This plan is for illustrative purposes only and should be used as such by any prospective purchaser. The services, systems and appliances shown have not been tested and no guarantee as to their operability or efficiency can be given.
Made with Metropix ©2024

