



Moor Lane, Dormansland, Lingfield, RH7 6NX

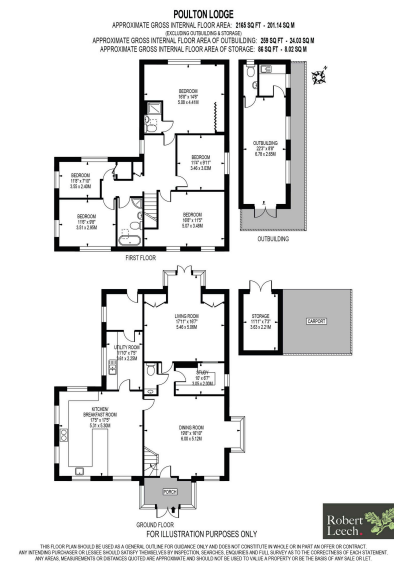
Guide Price £1,150,000

🛏 5 🚿 2 🚗 3

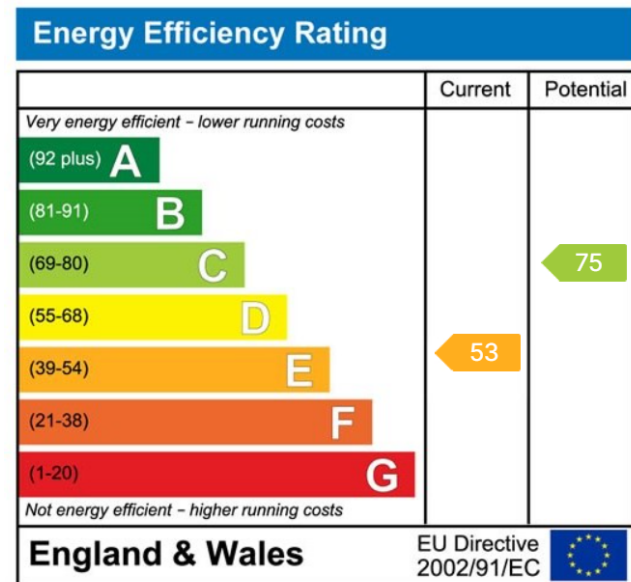


- Substantial Detached Home • 5 Bedrooms
- 1.3 Acre Plot • Stunning Views Across Open Fields
- Main Kitchen/ Family Room • Separate Lodge
- Car Barn and Ample Parking • 3 Reception Rooms





A substantial and characterful detached family home set in a highly sought-after semi-rural position on the edge of Dormansland village, offering five bedrooms, generous and versatile living space, far-reaching views and beautifully established grounds of approximately 1.3 acres. Approached via a sweeping driveway and complemented by a separate insulated lodge, the property combines privacy, practicality and excellent commuter links with a strong village community, highly regarded schools and easy access to Lingfield, East Grinstead and London.



DISCLAIMER. PROPERTY MISDESCRIPTIONS. Whilst every attempt has been made to ensure accuracy of the property details, no responsibility is taken for error, omission or mis-statement. The Agent has not yet tested any apparatus, equipment, fixtures and fittings or services and so cannot verify that they are in working order or fit for the purpose. A buyer is advised to obtain verification from their Solicitor or Surveyor. References to the Tenure of a property are based on information supplied by the Seller. The agent has not had sight of the title documents.