



ROB LETTS

POWERED BY
exp[®] UK

Westgate Apartments, York

£375,000

🛏️ 2 🚿 2 🚻 1



RL0918 - This striking seven-story building has become an extremely popular residential development and now, a well-known landmark in York city centre. The development enjoys an enviable riverside setting, nestled beside the peaceful Memorial Gardens and directly opposite the iconic city walls. During the day, a friendly concierge is on hand to welcome both residents and visitors, ensuring the building is well-maintained and secure. Step inside, and you'll be greeted by an impressive atrium featuring a stunning water feature and convenient lift access.

This stunning fifth-floor apartment welcomes you with a sizeable entrance lobby which gives access into a spacious hallway. As you step in to the impressive reception room your attention is drawn to the amount of natural light streaming in through from the expansive SOUTH FACING floor-to-ceiling corner window – a standout feature of the open-plan living space. The entire apartment has been tastefully upgraded in recent years, enhancing both style and comfort.

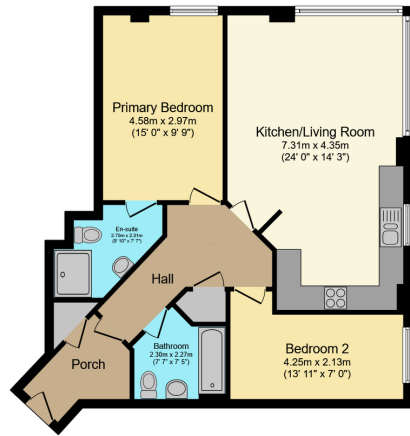
The kitchen is fitted with a comprehensive range of wall and base units, providing ample storage and preparation space. It's further complemented by a selection of integrated appliances, which includes, fridge, freezer, dishwasher, washing machine, oven, touch control hob and wine cooler.

There are two bedrooms, the large master bedroom has a feature panelled wall and modern en-suite shower room. The main bathroom comprises a three piece suite including bath with shower attachment and separate shower over.

The property also benefits with on site Allocated parking space and communal bike store.

This development is perfectly located to provide quick and easy access to everything York has to offer – from exploring the stunning Minster to enjoying a relaxed evening meal at one of the city's many fabulous eateries. Or perhaps you'd prefer a peaceful stroll along the river to reset and unwind.



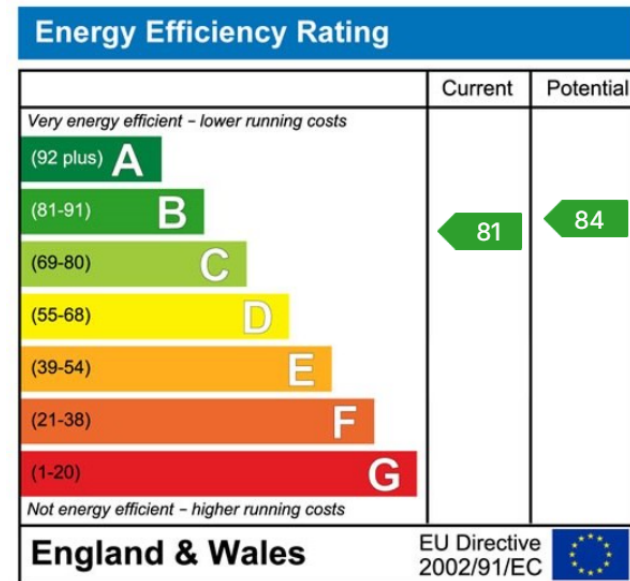


Floor Plan
Floor area 76.2 sq.m. (821 sq.ft.)

TOTAL: 76.2 sq.m. (821 sq.ft.)

This floor plan is for illustrative purposes only. It is not drawn to scale. Any measurements, floor areas (including any total floor area), openings and orientations are approximate. No details are guaranteed, they cannot be relied upon for any purpose and do not form any part of any agreement. No liability is taken for any error, omission or misstatement. A party must rely upon its own inspection(s). Powered by www.Propertybox.ie

- Fifth Floor Apartment
- En-suite Shower Room
- Modern Fitted Kitchen With Built In Appliances
- Impressive SOUTH FACING Floor-TO-Ceiling Corner Window
- City Centre Riverside Location
- Two Bedrooms
- Large Open Plan Living Room
- Private & Secure Allocated Parking
- Concierge Service & No Forward Chain
- Quote RL0918 To Book Your Viewing



ROB LETTS



07538 298 866



robletts.exp.uk.com



rob.letts@exp.uk.com