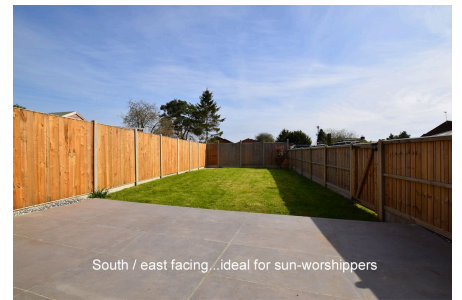




## Wootton Road, King's Lynn

Offers Over £329,995

4 2 2



**Looking for that somewhere special with large rooms for all the family?** This semi-detached, period house has been redecorated throughout with new carpets added ready for you to simply put down your furniture and enjoy. Located on the desirable Wootton Road and falling within the Kings Lynn Academy catchment area, there are 4 well-proportioned bedrooms, 2 large receptions as well as a bathroom and separate shower room. There is parking to the front and a recently fenced and lawned rear garden which faces south / east so once the furniture is down, you can go grab a drink and enjoy the sun.

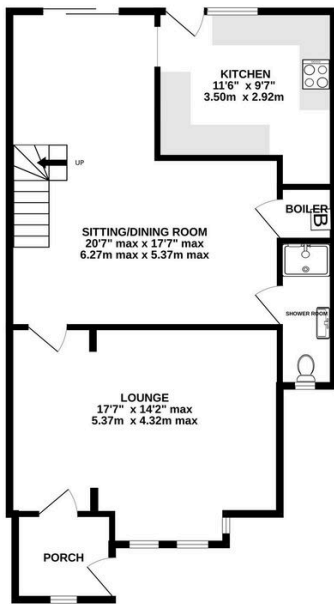




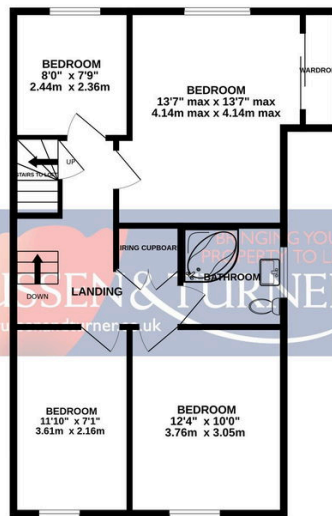
## Key Features

- Semi-detached house
- 2 Receptions
- Useful loft Space
- South / east facing garden
- Extended
- 4 bedrooms
- Bathroom & Shower room
- Private parking
- No chain
- Desirable location

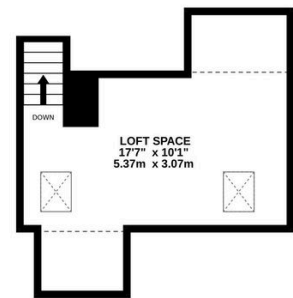
GROUND FLOOR  
711 sq.ft. (66.1 sq.m.) approx.



1ST FLOOR  
604 sq.ft. (56.1 sq.m.) approx.



2ND FLOOR  
229 sq.ft. (21.2 sq.m.) approx.



TOTAL FLOOR AREA: 1544 sq.ft. (143.4 sq.m.) approx.

Whilst every attempt has been made to ensure the accuracy of the floorplan contained here, measurements of doors, windows, rooms and any other items are approximate and no responsibility is taken for any error, omission or mis-statement. This plan is for illustrative purposes only and should be used as such by any prospective purchaser. The services, systems and appliances shown have not been tested and no guarantee as to their operability or efficiency can be given.  
Made with Metropix ©2024

