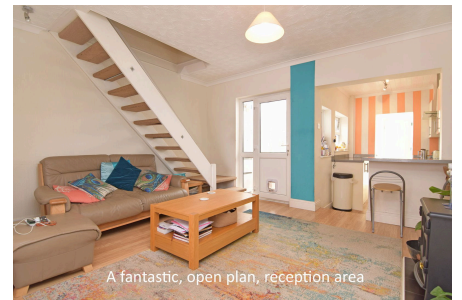




193 Wootton Road, King's Lynn

Offers Over £225,000

3 2 2

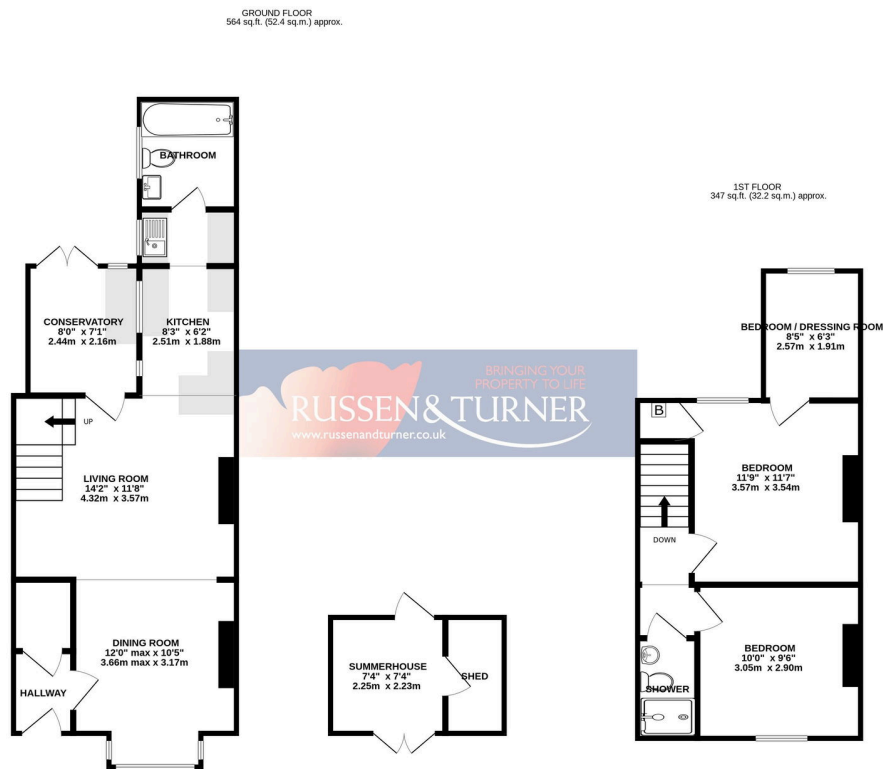


SOUGHT AFTER LOCATION! Set along the highly desirable Wootton Road, this wonderfully presented, superbly versatile, mid terrace house would make the perfect home for a first time buyer or young family. With parking, a private garden and gas central heating it's ready to be enjoyed from day one.



Key Features

- Mid Terraced House
- Bright and Airy Open Plan Living Accommodation
- Private Rear Garden
- Sought After Location
- Perfect First Home
- Two/Three Bedrooms
- Two Bathrooms
- Off-road Parking
- Gas Central Heating
- Wonderful Presentation - Move in ready



TOTAL FLOOR AREA: 911 sq.ft. (84.7 sq.m.) approx.

Whilst every attempt has been made to ensure the accuracy of the floorplan contained here, measurements of doors, windows, rooms and any other items are approximate and no responsibility is taken for any error, omission or mis-statement. This plan is for illustrative purposes only and should be used as such by any prospective purchaser. The services, systems and appliances shown have not been tested and no guarantee as to their operability or efficiency can be given.
Made with Metropix 02/2024

