




Sandalls Close, Birmingham

Offers Over £175,000

 3  1  1

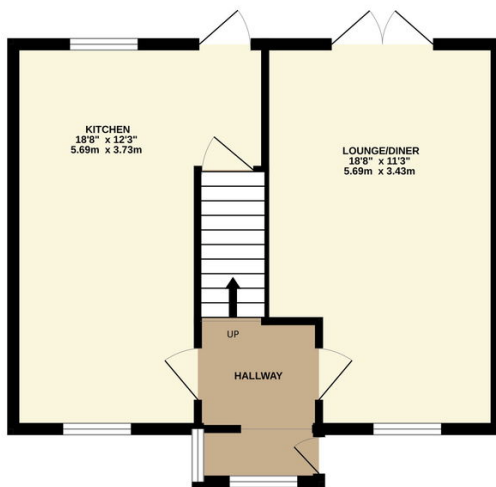


3-Bedroom End-Terraced Home in Sandalls Close, Birmingham

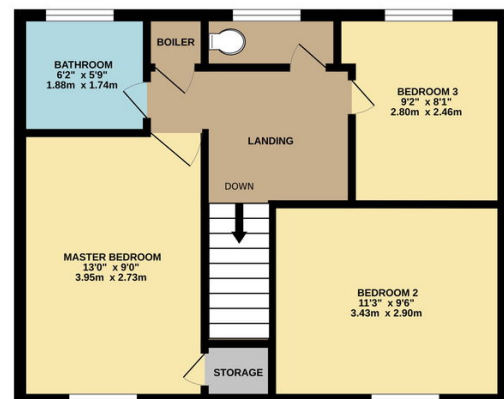
Nestled in Sandalls Close, B31 2UP, this 3-bedroom end-terraced property is perfectly positioned for first-time buyers and savvy property investors alike.

- Situated in the desirable Sandalls Close, Birmingham, B31 2UP
- Generous kitchen space with access to the outdoor area, perfect for family meal
- Family Bathroom Including a separate W.C. for added convenience
- Brick-built outbuilding (approximately 10ft x 5ft) suitable for secure storage
- Large living area with front and rear aspect views, featuring elegant French doors to the rear garden
- Three good-sized bedrooms providing ample living space for family comfort
- Rear Garden, Mostly laid to lawn with a patio area, perfect for entertaining or relaxation
- Nearest Train Stations - Northfield Station and Longbridge Station

GROUND FLOOR



1ST FLOOR



Whilst every attempt has been made to ensure the accuracy of the floorplan contained here, measurements of doors, windows, rooms and any other items are approximate and no responsibility is taken for any error, omission or mis-statement. This plan is for illustrative purposes only and should be used as such by any prospective purchaser. The services, systems and appliances shown have not been tested and no guarantee as to their operability or efficiency can be given.
Made with Metropix ©2024