



RAPHAEL AGBANDJE **exp** UK

POWERED BY

TM

@ raphael.agbandje@exp.uk.com

🌐 raphaelagbandje.exp.uk.com

☎ 0203 488 5876

Kirkham Street, Plumstead, London SE18 2JX

Offers Over £425,000

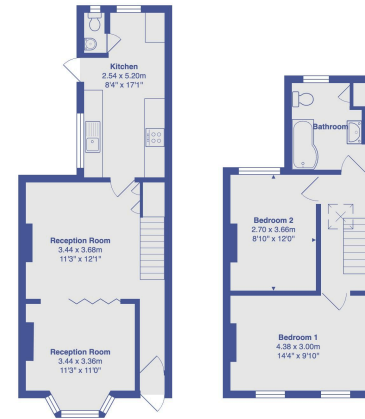
🛏️ 2 🚿 1 🚗 1

- Victorian Terrace
- Two Double Bedrooms
- Spacious through Lounge with Bi Fold Doors
- Herringbone Style Floors
- Modern High Spec Kitchen
- Additional Ground Floor WC
- Contemporary Interior Styling
- Landscaped Rear Garden
- Plumstead Common Close by
- Close to Amenities and Transport



This beautifully refurbished and extended two-bedroom Victorian terraced home offers contemporary living across approximately 850 sq ft. Upon entering the ground floor, you are welcomed into a bright and airy open-plan reception area, featuring elegant Herringbone-style flooring, high ceilings, and abundant natural light. Bi-fold doors enhance the flexibility of this inviting space. At the rear, the stunning modern kitchen is well-appointed with integrated appliances and provisions for additional appliances, while a convenient ground-floor WC is tucked behind the kitchen. The landscaped garden, designed for seamless indoor-outdoor living, serves as an ideal extension of the home during warmer months.

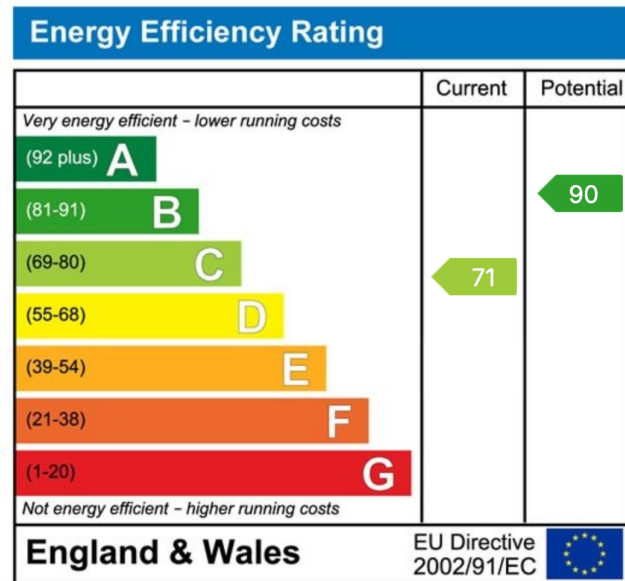




Kirkham Street, Plumstead, SE18 2JX

Total Area: 80.4 m² ... 865 ft²

All measurements are approximate and for display purposes only



eXp World UK Ltd is a registered company at Level 37, 25 Canada Square, London, E14 5LQ.

Registered company number is 12016573. VAT Registration Number is 327 4120 29