



RAPHAEL AGBANDJE POWERED BY **exp** TM UK

@ raphael.agbandje@exp.uk.com

🌐 raphaelagbandje.exp.uk.com

☎ 0203 488 5876

Eltham Green, Eltham, London SE3 5JZ

Offers Over £800,000

3 2 2

- Eltham Green Conservation Area
- 3/4 Bedrooms
- Modern Kitchen with Appliances
- Mature Rear Garden in excess of 100 ft
- Easy Access to the A2
- Detached Period Home
- Period Details Throughout
- Garage and Workshop
- Under a Mile to Eltham and Kidbrooke Rail Stations
- Chain Free



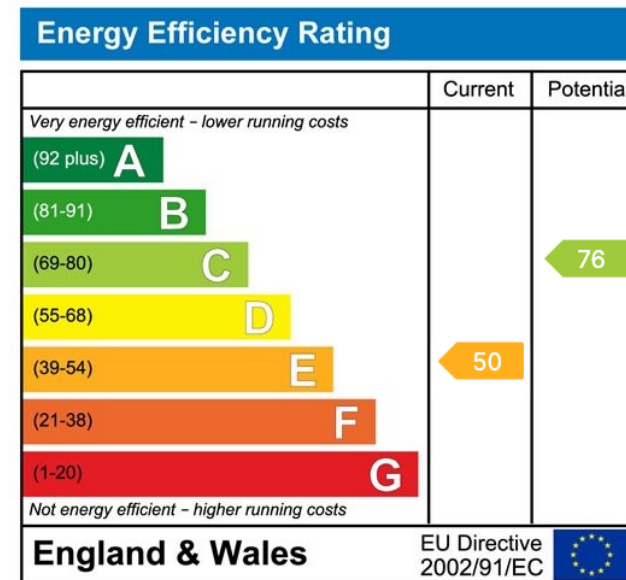
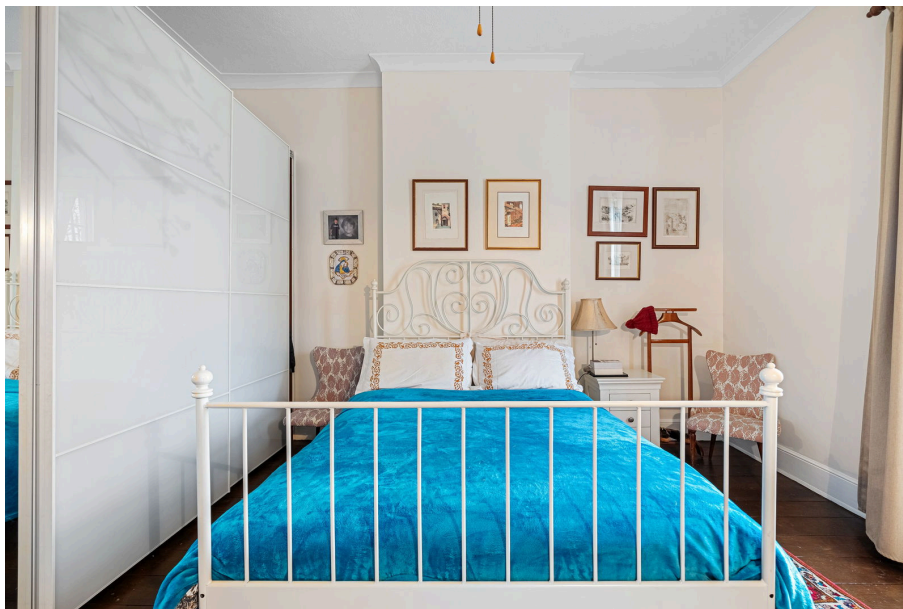
This delightful 3/4 bedroom detached period home offers a tranquil retreat in the picturesque Eltham Green Conservation Area. Spanning approximately 1885 square feet, the property boasts a wealth of original features and modern comforts.

The ground floor welcomes you with a spacious hallway leading to the elegant living room, featuring high ceilings, stripped wooden floors, and a beautiful period fireplace. A second reception room, ideal for dining, provides direct access to the rear garden. The modern kitchen is equipped with integrated appliances, and a hallway leads to a convenient office space and shower room.

Upstairs, you'll find three generously sized bedrooms and a stylish Victorian-style bathroom.

Outside, the approximately 160-foot garden offers a peaceful outdoor space, complete with a substantial outbuilding. The





eXp World UK Ltd is a registered company at Level 37, 25 Canada Square, London, E14 5LQ.
 Registered company number is 12016573. VAT Registration Number is 327 4120 29