



RAPHAEL AGBANDJE POWERED BY **exp** TM UK

@ raphael.agbandje@exp.uk.com

🌐 raphaelagbandje.exp.uk.com

☎ 0203 488 5876

Hervey Road, Blackheath, London SE3 8BS

Offers Over £450,000

🛏️ 2 🍳 1 🚿 1

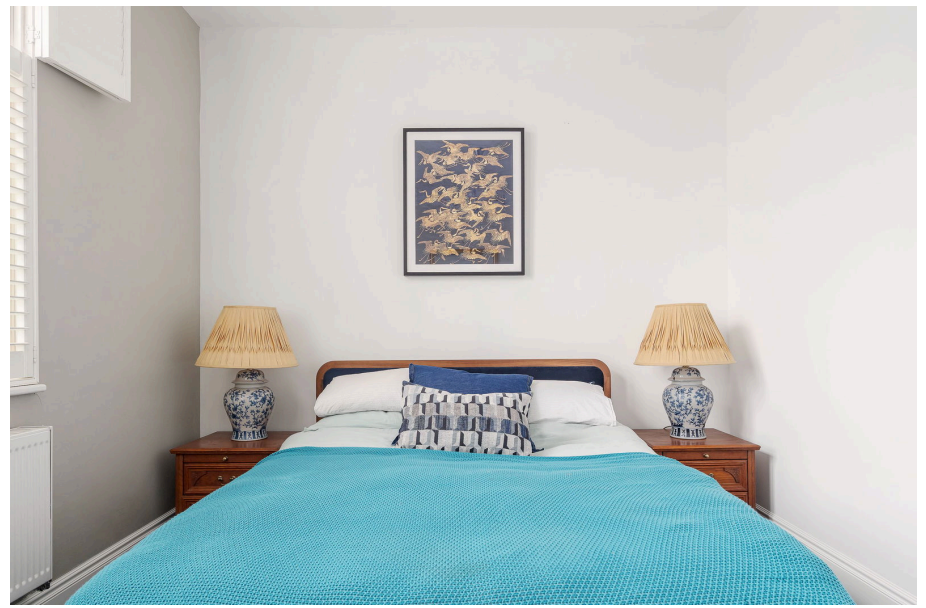
- Chain Free
- Beautiful Modern Kitchen with Integrated Appliances
- Sleek Shower Room
- Communal Gardens
- Allocated Parking
- Two Double Bedrooms
- Chic Lounge with High Ceilings
- Private Roof Terrace
- Allocated Parking
- Close to Blackheath Village

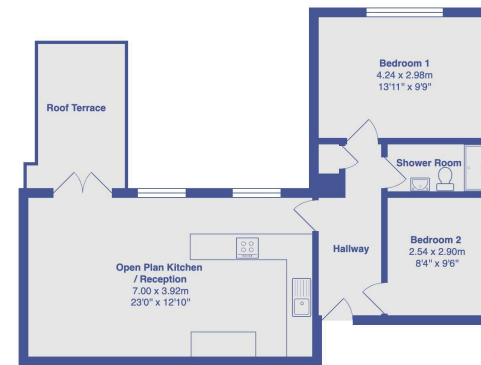


Presenting this beautifully refurbished two-bedroom first-floor apartment, offered to the market chain-free. Set within an elegant red-brick period building, this stylish property offers approximately 650 sq ft of contemporary living space filled with natural light.

The apartment showcases a thoughtfully designed interior, with no expense spared by the current owner. The open-plan reception and kitchen area feature striking deep blue cabinetry, complemented by light granite worktops and premium BOSCH integrated appliances. High ceilings and abundant windows create an airy and spacious ambiance in the chic lounge, which opens onto a private roof terrace—perfect for relaxing or entertaining.

The property further comprises two generous double bedrooms and a sleek, uniquely designed shower room.

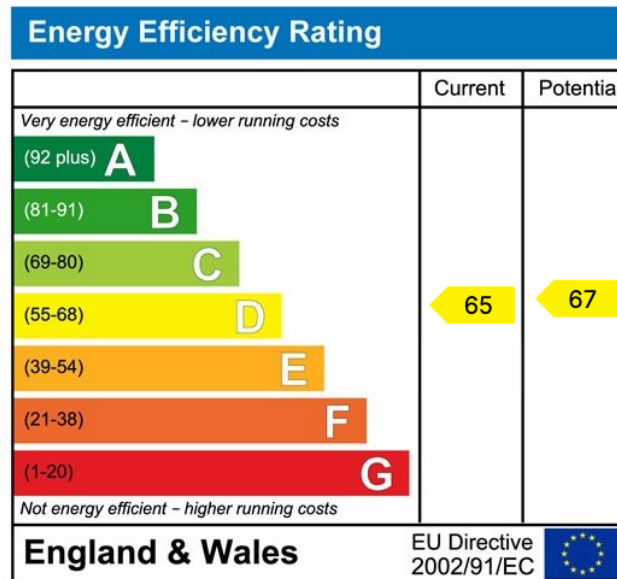




26, Hervey Road, Kidbrooke, SE3 8BS

Total Area: 59.1 m² ... 636 ft²

All measurements are approximate and for display purposes only



eXp World UK Ltd is a registered company at Level 37, 25 Canada Square, London, E14 5LQ.

Registered company number is 12016573. VAT Registration Number is 327 4120 29