



RAPHAEL AGBANDJE POWERED BY **exp** TM UK

@ raphael.agbandje@exp.uk.com

🌐 raphaelagbandje.exp.uk.com

☎ 0203 488 5876

Flaxton Road, Plumstead, London SE18 2JR

Offers Over £425,000

🛏️ 2 🚿 1 🛋️ 2

- Victorian Terrace
- Charming Interior Styling
- Modern Kitchen with spaces for appliances
- West Facing Mature Rear Garden
- Close to Transport and Amenities
- Two Double Bedrooms
- Period Details
- Smart Modern Bathroom
- Fully Powered Office/Garden Room
- Open Green Spaces of Plumstead and Winns Commons Nearby

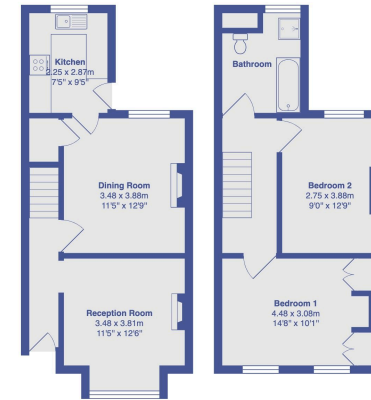


A charming two-bedroom Victorian terraced house located in one of Plumstead's most sought-after roads, just a short walk from Winns and Plumstead Commons. Spanning approximately 800 sq ft, this home has been meticulously restored by its current owner to blend period charm with modern convenience.

On the ground floor, you'll find two inviting reception rooms, both featuring stripped wooden floors and elegant period fireplaces. The recently renovated kitchen offers generous worktop space, room for all your appliances, and stylish tiled flooring.

Upstairs, the property boasts two spacious double bedrooms. The front-facing main bedroom includes bespoke built-in wardrobes, while the beautifully appointed bathroom reflects classic design.

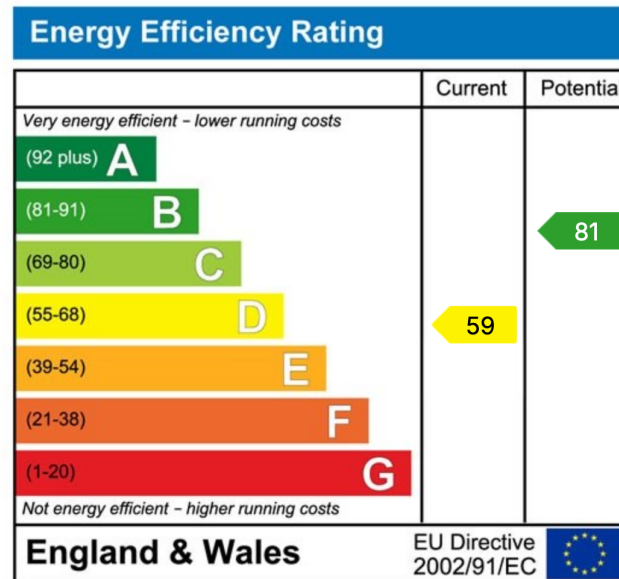




Flaxton Road, Plumstead, SE18 2JR

Total Area: 75.0 m² ... 807 ft²

All measurements are approximate and for display purposes only



eXp World UK Ltd is a registered company at Level 37, 25 Canada Square, London, E14 5LQ.

Registered company number is 12016573. VAT Registration Number is 327 4120 29