

Beech Crescent, Eckington

Guide Price £180,000

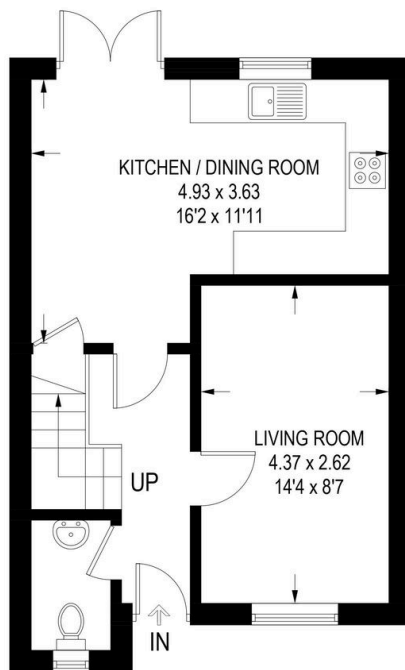
3 1 1



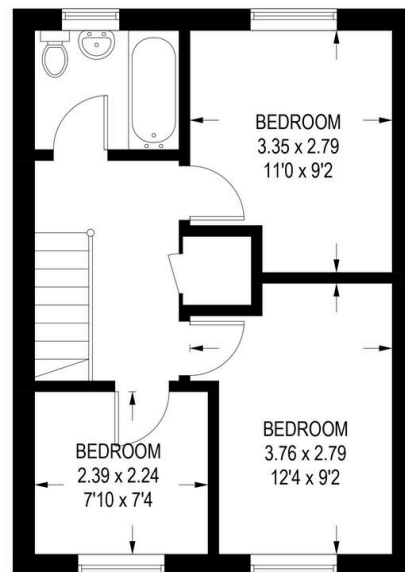
GUIDE PRICE: £180,000- £190,000. A fantastic opportunity to acquire this modern, three-bedroom semi-detached home situated in a desirable location. Perfectly suited for first-time buyers or families alike, this property offers a stylish and functional layout, with a spacious kitchen/diner, convenient downstairs WC, off-road parking, and a generously sized rear garden. The home is ideally positioned close to excellent local amenities, shops, and well-regarded schools. Property Reference: RB0377.

- Semi Detached House
- Kitchen/Diner
- Modern Throughout
- Driveway
- Viewing Advised
- Three Bedrooms
- Downstairs W.C.
- Good Sized Garden
- Great Location
- Property Reference: RB0377

APPROXIMATE GROSS INTERNAL AREA = 72.8 SQ M / 783 SQ FT



GROUND FLOOR
36.9 SQ M / 397 SQ FT



FIRST FLOOR
35.9 SQ M / 386 SQ FT

Illustration for identification purposes only,
measurements are approximate, not to scale.