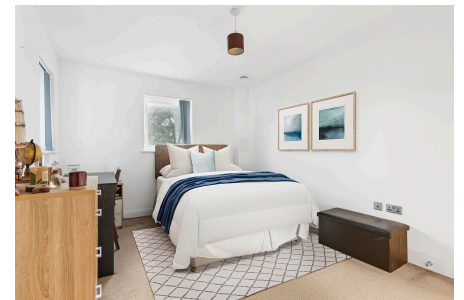
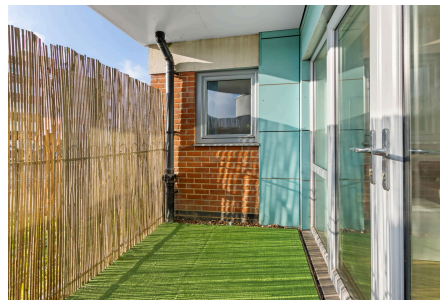


Cowdrey Mews, SE6

Guide Price £270,000

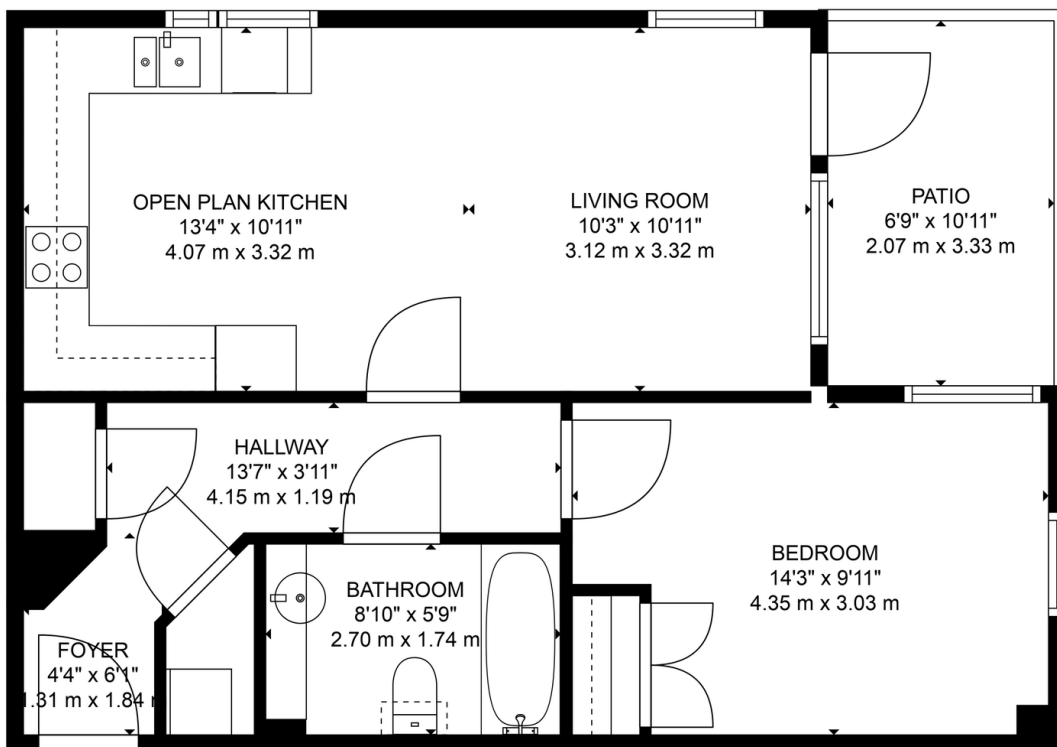
🛏 1 🚿 1 🚗 1



Quote AB0697 - A modern and light ground floor one bedroom apartment situated within a contemporary secure block in Lower Sydenham. The property is brought to market in turn key condition, boasts 581 Sq ft of interior space, and would make an excellent first time buy. Cowdrey Mews is perfectly situated for the many local amenities of Sydenham, Bell Green, and Downham. Lower Sydenham Station (Overground), offering direct links in London Bridge and Charing Cross is located 0.4 miles away.

Key Features

- Quote AB0697
- 581 Sq Ft
- South Facing Private Balcony Garden
- Long Lease Remaining - Approx 113 Years
- Local Amenities within 0.25 Miles
- One Bedroom
- Chain Free
- Ground Floor
- Ideal First Time Purchase
- Close to Lower Sydenham Station (Overground)



TOTAL: 571 sq. ft, 53 m2
FLOOR 1: 571 sq. ft, 53 m2
EXCLUDED AREAS: PATIO: 74 sq. ft, 7 m2

FLOOR PLAN CREATED BY CUBICASA APP. MEASUREMENTS DEEMED HIGHLY RELIABLE BUT NOT GUARANTEED.

