

Building No.8 Carnation way, 9 Elms, London, SW8 5FS

£2,000,000

3 2 1



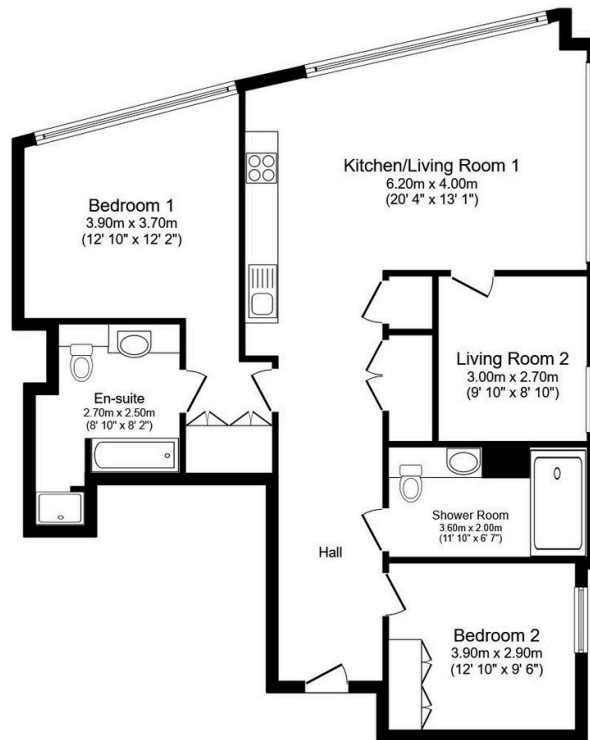
THREE BEDROOM - TWO BEDROOM - ENSUITE - 24 CONCIERGE - POOL - GYM - SWIMMING - LEASEHOLD - CHAIN FREE

Henry Wiltshire is delighted to present an exceptional opportunity to purchase this modern three-bedroom, two-bathroom apartment located within the highly sought-after Thames City development.

The apartment comprises three spacious double bedrooms, including a master bedroom featuring a walk-in wardrobe and an en-suite bathroom. The main reception area is open-plan, combining a kitchen and dining space, with wood flooring throughout, except in the bedrooms.

The building offers a range of luxurious amenities, including a 24-hour concierge service, a fully-equipped residential gym, a swimming pool, and spa facilities – perfect for those seeking an all-inclusive, high-end living experience.

- Three Bedroom
- Lift Access
- Gym
- Lease Remaining
- Ground Rent
- Two Bedroom
- 24 Concierge
- Swimming Pool
- Service Charge
- Parking



This floor plan is for illustrative purposes only. It is not drawn to scale. Any measurements, floor areas (including any total floor area), openings and orientation are approximate. No details are guaranteed, they cannot be relied upon for any purpose and they do not form part of any agreement. No liability is taken for any error, omission or misstatement. A party must rely upon its own inspection(s). Powered by www.focalagent.com