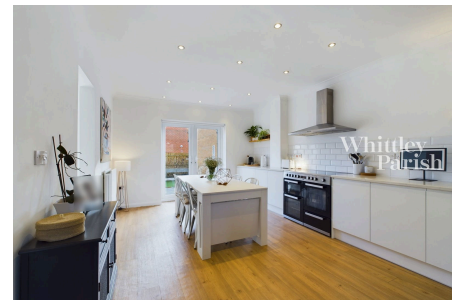


Ashton Road, Eye

Guide Price £450,000 - £475,000

5 3 1



No onward chain. Substantial four/five bedroom detached house with double garage and close to the town centre.

Key Features

- Guide Price 450,000 - £475,000
- Substantial detached house
- Recently upgraded kitchen
- Double garage & parking for multiple cars
- Council Tax Band E
- No onward chain
- Five bedrooms
- Well presented throughout
- Freehold - EPC Rating C
- Gas heating - Mains drainage

