

Your Logo

Commercial Road, DEREHAM, Norfolk, NR19 1AE

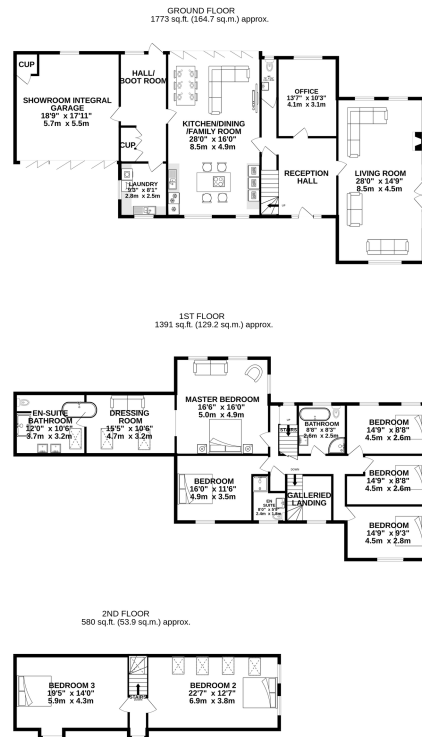
Offers Over £650,000

🛏️ 5 🚗 2 🚗 4



Your Logo

- NM0928
- SECURE GATED PRIVATE GROUNDS OF 0.48 ACRES IN CENTRAL DEREHAM LOCATION
- £150,000 RENOVATION IN 2022/24
- SUITABLE SIZE/LAYOUT FOR A CAREHOME OR ASSISTED/SHELTERED LIVING
- 7 BEDROOMS - 3 BATHROOMS - LAUNDRY ROOM - BOOT ROOM - X10 PARKING
- SHOWROOM STYLE INTEGRAL DOUBLE GARAGE WITH BI-FOLD DOORS
- IMMACULATE INTERIOR WITH RE-FITTED BATHROOMS AND KITCHEN
- TWO 26FT RECEPTION ROOMS WITH BI-FOLD DOORS AND GARDEN VIEWS
- IDEAL HMO INVESTMENT PROPERTY FOR CO-LIVING PROFESSIONALS
- 3,800 SQ.FT DETACHED HOME SET OVER THREE FLOORS



TOTAL FLOOR AREA: 3743 sq.ft. (347.8 sq.m.) approx.
Whilst every attempt has been made to ensure the accuracy of the floorplan contained herein, measurements of doors, windows, rooms and any other items are approximate and no responsibility is taken for any error, omission or mis-statement. This plan is for illustrative purposes only and should not be used as such by any prospective purchaser. The services, systems and appliances shown have not been tested and no guarantee as to their operability or efficiency can be given.
 Made with floorplan 10/24



NM0928

Are you searching for a high quality HMO investment property within a town centre location, with a high demand of prospective tenants?

Are you trying to source a suitable property to convert into a smaller care home/assisted or sheltered living for over 55's but are struggling with conversion costs, value and space?

Your Logo

Perhaps you are a business owner/car enthusiast who is looking to move your business into a substantial sized home that neatly divides work and family?

Or maybe have a large family that need to prioritise maximum space, bedrooms and value, over a smaller home in a more sedate, residential location?

If these lifestyles appeal to you, this immaculately renovated property, could be the one, that you have been searching so hard to find.....