



Swan Mews, Swan Road, Lichfield

£270,000

2 1 1



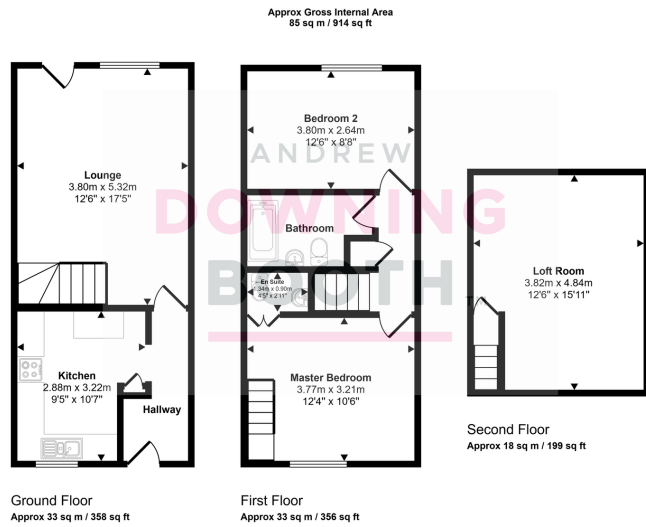
'Birds of a feather flock together' and you'll be flocking to this wonderful home at the heart of Lichfield's beautiful city centre. Positioned just over the road from Beacon Park, (yes it is so close that you can see it in some of the property photos), this property really could be the perfect lock up and leave or would be ideal for anyone looking for something low maintenance. Coming to the market with very spacious accommodation for a two bedroom home, the property comprises a through entrance hall, kitchen and large lounge diner with door opening out to the stunning communal gardens. Upstairs are those two double bedrooms, with a separate family bathroom. The master has a cleverly installed WC style ensuite, and stairs leading up to a useful loft room, ideal for an easily accessible storage facility. Outside, a parking space sits to the front, as well as an exterior store cupboard, whilst to the rear are wonderful communal gardens, providing the ideal outdoor spot for a quiet drink in the sun. Don't forget, the early bird gets the worm, so book in an early viewing to avoid disappointment!



ANDREW
DOWNING
BOOTH
ESTATE AGENTS



ANDREW
DOWNING
BOOTH
ESTATE AGENTS



This floorplan is only for illustrative purposes and is not to scale. Measurements of rooms, doors, windows, and any items are approximate and no responsibility is taken for any error, omission or mis-statement. Icons of items such as bathroom suites are representations only and may not look like the real items. Made with Made Snappy 360.

- Two Double Bedroom Terraced Home
- Parking Space
- Large Lounge Diner & Kitchen
- Ideally Located For Lichfield City Centre
- Stunning Communal Gardens
- First Floor Bathroom & Useful Loft Room

