



ANDREW
DOWNING
BOOTH™
ESTATE AGENTS

Moat Way, Handsacre, Rugeley

£205,000

🛏️ 2 🍳 1 🚗 1



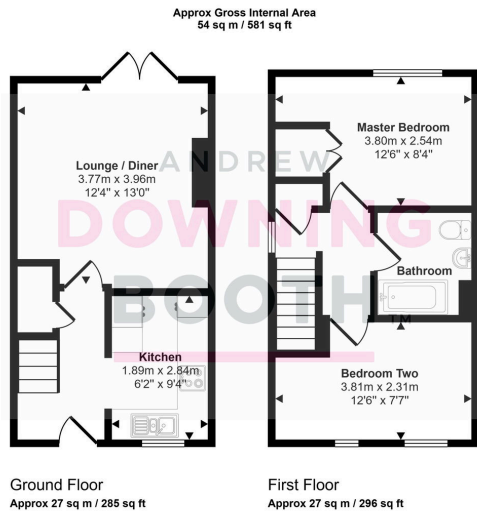
A charmingly positioned and deceptively spacious two double bedroom home in the popular village of Handsacre, Rugeley. Nestled towards the end of Moat Way, this impressive semi-detached property offers exceptional value for money and ticks just about every box for first time buyers, downsizers or investors.

Location-wise, the property benefits from sitting in the semi-rural and always popular village of Armitage, just a five minute drive from the stunning Cannock Chase and approximately a ten minute drive from Lichfield and its city centre.

The accommodation is set across two floors, with a welcoming entrance hall, spacious and naturally bright lounge/diner and attractive kitchen all to the ground floor, whilst the first floor benefits two double bedrooms and the contemporary bathroom. A charming frontage is complimented by a good size driveway and a mature and generous lawned garden to make up the property's exterior.

Properties offering such exceptional value for money simply must be viewed in order to be appreciated.





This floorplan is only for illustrative purposes and is not to scale. Measurements of rooms, doors, windows, and any items are approximate and no responsibility is taken for any error, omission or mis-statement. Icons of items such as bathroom suites are representations only and may not look like the real items. Made with Made Snappy 360.

- Two Double Bedroom Semi-Detached Property
- Spacious Lounge / Diner
- Generous Room Sizes Throughout
- Council Tax Band: B
- Fabulous Value For Money
- Naturally Bright Kitchen & Contemporary Bathroom
- Popular Location With Easy Access To A Wide Range Of Amenities
- EPC Rating: TBC

