



Leighswood Avenue, Aldridge

Offers Over £300,000

3 1 2



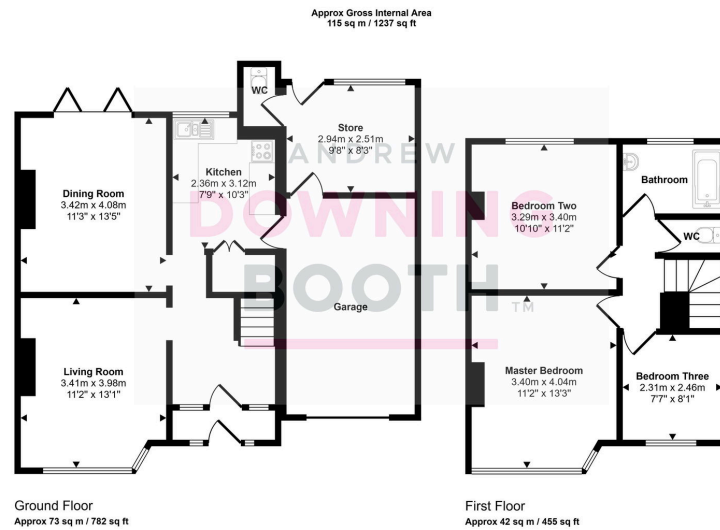
Superb space across both floors, wonderfully light and airy accommodation, and a very impressive Master bedroom with a bay-fronted window; just three of the fabulous features enjoyed by this three bedroom family home in Leighswood Avenue, Aldridge.

Location-wise, the property sits within easy access to a wide range of amenities and is just a picturesque twenty minute drive from Lichfield, Chasewater Country Park and other surrounding areas, with plenty of surrounding countryside offering scenic walks and trails for any keen ramblers.

The accommodation is set across two floors, with a welcoming entrance hall providing access to a naturally bright and generous living room, separate flexible dining room and kitchen all to the ground floor, whilst all three bedrooms, bathroom and WC sit to the first floor. An impressive plot boasts mature lawned gardens to both the front and rear, whilst a good size driveway, garage and additional store provide excellent parking and storage options.

Value for money features abundantly; viewing is absolutely essential.





This floorplan is only for illustrative purposes and is not to scale. Measurements of rooms, doors, windows, and any items are approximate and no responsibility is taken for any error, omission or mis-statement. Icons of items such as bathroom suites are representations only and may not look like the real items. Made with Made Snappy 360.

- Three Bedroom Semi-Detached Family Home
- Wonderfully Naturally Bright Throughout
- Generous Bay-Fronted Living Room Plus Good Size Dining Room
- Consistently Impressive Room Sizes
- Lawned Gardens To Front & Rear Plus Garage & Additional Store
- Practical & Convenient Location With Access To Amenities
- Council Tax Band: C
- EPC Rating: TBC

